

Anti-GPR82 Antibody

Rabbit polyclonal antibody to GPR82

Catalog # AP59831

Product Information

Application	WB, IP
Primary Accession	Q96P67
Other Accession	Q8BZR0
Reactivity	Human, Mouse, Rat
Host	Rabbit
Clonality	Polyclonal
Calculated MW	38409

Additional Information

Gene ID	27197
Other Names	Probable G-protein coupled receptor 82
Target/Specificity	KLH-conjugated synthetic peptide encompassing a sequence within the center region of human GPR82. The exact sequence is proprietary.
Dilution	WB~~WB (1/500 - 1/1000), IP (1/10 - 1/100) IP~~N/A
Format	Liquid in 0.42% Potassium phosphate, 0.87% Sodium chloride, pH 7.3, 30% glycerol, and 0.09% (W/V) sodium azide.
Storage	Store at -20 °C.Stable for 12 months from date of receipt

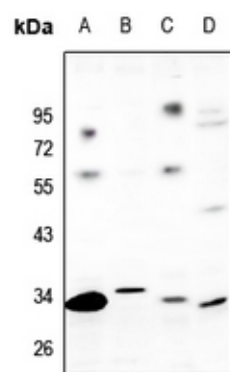
Protein Information

Name	GPR82
Function	Orphan receptor.
Cellular Location	Cell membrane; Multi-pass membrane protein.

Background

KLH-conjugated synthetic peptide encompassing a sequence within the center region of human GPR82. The exact sequence is proprietary.

Images



Western blot analysis of GPR82 expression in A549 (A), HeLa (B), PMVEC (C), MCF7 (D) whole cell lysates.

Please note: All products are 'FOR RESEARCH USE ONLY. NOT FOR USE IN DIAGNOSTIC OR THERAPEUTIC PROCEDURES'.