

Anti-STEAP1 Antibody

Rabbit polyclonal antibody to STEAP1

Catalog # AP59828

Product Information

Application	WB, IHC
Primary Accession	Q9UHE8
Reactivity	Human
Host	Rabbit
Clonality	Polyclonal
Calculated MW	39851

Additional Information

Gene ID	26872
Other Names	PRSS24; STEAP; Metalloreductase STEAP1; Six-transmembrane epithelial antigen of prostate 1
Target/Specificity	KLH-conjugated synthetic peptide encompassing a sequence within the N-term region of human STEAP1. The exact sequence is proprietary.
Dilution	WB~~WB (1/500 - 1/1000), IHC (1/100 - 1/200) IHC~~WB (1/500 - 1/1000), IHC (1/100 - 1/200)
Format	Liquid in 0.42% Potassium phosphate, 0.87% Sodium chloride, pH 7.3, 30% glycerol, and 0.09% (W/V) sodium azide.
Storage	Store at -20 °C.Stable for 12 months from date of receipt

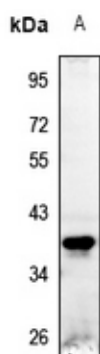
Protein Information

Name	STEAP1
Synonyms	PRSS24, STEAP
Function	Does not function as a metalloreductase due to the absence of binding sites for the electron-donating substrate NADPH. Promotes Fe(3+) reduction when fused to the NADPH-binding domain of STEAP4.
Cellular Location	Endosome membrane {ECO:0000250 UniProtKB:Q9CWR7}; Multi-pass membrane protein. Cell membrane; Multi-pass membrane protein
Tissue Location	Ubiquitously expressed. Highly expressed in prostate tumors.

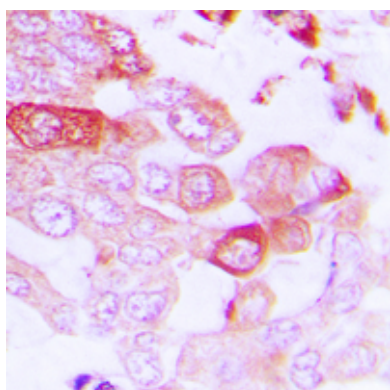
Background

KLH-conjugated synthetic peptide encompassing a sequence within the N-term region of human STEAP1. The exact sequence is proprietary.

Images



Western blot analysis of STEAP1 expression in U87MG (A) whole cell lysates.



Immunohistochemical analysis of STEAP1 staining in human lung cancer formalin fixed paraffin embedded tissue section. The section was pre-treated using heat mediated antigen retrieval with sodium citrate buffer (pH 6.0). The section was then incubated with the antibody at room temperature and detected using an HRP conjugated compact polymer system. DAB was used as the chromogen. The section was then counterstained with haematoxylin and mounted with DPX.

Please note: All products are 'FOR RESEARCH USE ONLY. NOT FOR USE IN DIAGNOSTIC OR THERAPEUTIC PROCEDURES'.