

# Anti-FASTKD2 Antibody

Rabbit polyclonal antibody to FASTKD2

Catalog # AP59811

## Product Information

Application	WB, IP
Primary Accession	<a href="#">Q9NYY8</a>
Other Accession	<a href="#">Q922E6</a>
Reactivity	Human, Mouse, Rat
Host	Rabbit
Clonality	Polyclonal
Calculated MW	81463

## Additional Information

Gene ID	22868
Other Names	KIAA0971; FAST kinase domain-containing protein 2
Target/Specificity	KLH-conjugated synthetic peptide encompassing a sequence within the center region of human FASTKD2. The exact sequence is proprietary.
Dilution	WB~~WB (1/500 - 1/1000), IP (1/10 - 1/100) IP~~N/A
Format	Liquid in 0.42% Potassium phosphate, 0.87% Sodium chloride, pH 7.3, 30% glycerol, and 0.09% (W/V) sodium azide.
Storage	Store at -20 °C.Stable for 12 months from date of receipt

## Protein Information

Name	FASTKD2 {ECO:0000303 PubMed:27667664, ECO:0000312 HGNC:HGNC:29160}
Function	Plays an important role in assembly of the mitochondrial large ribosomal subunit (PubMed: <a href="#">25683715</a> ). As a component of a functional protein-RNA module, consisting of RCC1L, NGRN, RPUSD3, RPUSD4, TRUB2, FASTKD2 and 16S mitochondrial ribosomal RNA (16S mt- rRNA), controls 16S mt-rRNA abundance and is required for intra- mitochondrial translation (PubMed: <a href="#">25683715</a> , PubMed: <a href="#">26370583</a> , PubMed: <a href="#">27667664</a> ). May play a role in mitochondrial apoptosis.
Cellular Location	Mitochondrion matrix, mitochondrion nucleoid Mitochondrion matrix. Note=Localizes to mitochondrial RNA granules found in close proximity to the mitochondrial nucleoids.  Expression detected in spleen, thymus, testis, ovary, colon, heart, smooth

**Tissue Location**

muscle, kidney, brain, lung, liver and white adipose tissue with highest expression in heart, smooth muscle and thyroid.

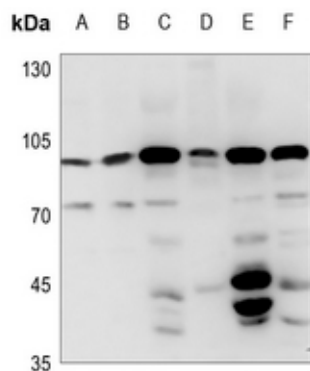
**Background**

---

KLH-conjugated synthetic peptide encompassing a sequence within the center region of human FASTKD2. The exact sequence is proprietary.

**Images**

---



Western blot analysis of FASTKD2 expression in H446 (A), A549 (B), mouse liver (C), mouse lung (D), rat liver (E), rat lung (F) whole cell lysates.

Please note: All products are 'FOR RESEARCH USE ONLY. NOT FOR USE IN DIAGNOSTIC OR THERAPEUTIC PROCEDURES'.