

Anti-NFE2L3 Antibody

Rabbit polyclonal antibody to NFE2L3

Catalog # AP59779

Product Information

Application	WB
Primary Accession	Q9Y4A8
Reactivity	Human, Rat
Host	Rabbit
Clonality	Polyclonal
Calculated MW	76154

Additional Information

Gene ID	9603
Other Names	NRF3; Nuclear factor erythroid 2-related factor 3; NF-E2-related factor 3; NFE2-related factor 3; Nuclear factor, erythroid derived 2, like 3
Target/Specificity	KLH-conjugated synthetic peptide encompassing a sequence within the center region of human NFE2L3. The exact sequence is proprietary.
Dilution	WB~~WB (1/500 - 1/1000)
Format	Liquid in 0.42% Potassium phosphate, 0.87% Sodium chloride, pH 7.3, 30% glycerol, and 0.09% (W/V) sodium azide.
Storage	Store at -20 °C.Stable for 12 months from date of receipt

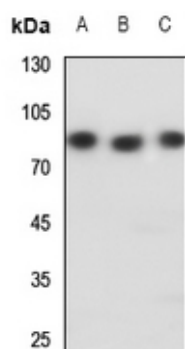
Protein Information

Name	NFE2L3
Synonyms	NRF3
Function	Activates erythroid-specific, globin gene expression.
Cellular Location	Nucleus {ECO:0000255 PROSITE-ProRule:PRU00978}.
Tissue Location	Highly expressed in human placenta and also in B- cell and monocyte cell lines. Low expression in heart, brain, lung, skeletal muscle, kidney and pancreas.

Background

KLH-conjugated synthetic peptide encompassing a sequence within the center region of human NFE2L3. The exact sequence is proprietary.

Images



Western blot analysis of NFE2L3 expression in H1688 (A), rat lung (B), rat testis (C) whole cell lysates.

Please note: All products are 'FOR RESEARCH USE ONLY. NOT FOR USE IN DIAGNOSTIC OR THERAPEUTIC PROCEDURES'.