

Anti-SOCS2 Antibody

Rabbit polyclonal antibody to SOCS2

Catalog # AP59759

Product Information

Application	WB
Primary Accession	O14508
Other Accession	O35717
Reactivity	Human, Mouse, Rat, Monkey, Pig, Bovine, Drosophila
Host	Rabbit
Clonality	Polyclonal
Calculated MW	22172

Additional Information

Gene ID	8835
Other Names	CIS2; SSI2; STATI2; Suppressor of cytokine signaling 2; SOCS-2; Cytokine-inducible SH2 protein 2; CIS-2; STAT-induced STAT inhibitor 2; SSI-2
Target/Specificity	KLH-conjugated synthetic peptide encompassing a sequence within the center region of human SOCS2. The exact sequence is proprietary.
Dilution	WB~~WB (1/500 - 1/1000)
Format	Liquid in 0.42% Potassium phosphate, 0.87% Sodium chloride, pH 7.3, 30% glycerol, and 0.09% (W/V) sodium azide.
Storage	Store at -20 °C.Stable for 12 months from date of receipt

Protein Information

Name	SOCS2 {ECO:0000303 PubMed:10512686, ECO:0000312 HGNC:HGNC:19382}
Function	Substrate-recognition component of a cullin-5-RING E3 ubiquitin-protein ligase complex (ECS complex, also named CRL5 complex), which mediates the ubiquitination and subsequent proteasomal degradation of target proteins, such as EPOR and GHR (PubMed: 11781573 , PubMed: 21980433 , PubMed: 25505247 , PubMed: 31182716 , PubMed: 34857742). Specifically recognizes and binds phosphorylated proteins via its SH2 domain, promoting their ubiquitination (PubMed: 21980433 , PubMed: 25505247 , PubMed: 31182716 , PubMed: 34857742 , PubMed: 37816714). The ECS(SOCS2) complex acts as a key regulator of growth hormone receptor (GHR) levels by mediating ubiquitination and degradation of GHR, following GHR phosphorylation by JAK2 (PubMed: 21980433 , PubMed: 25505247 , PubMed: 34857742). The ECS(SOCS2) also catalyzes ubiquitination and

degradation of JAK2-phosphorylated EPOR (PubMed:[11781573](#)).

Cellular Location

Cytoplasm.

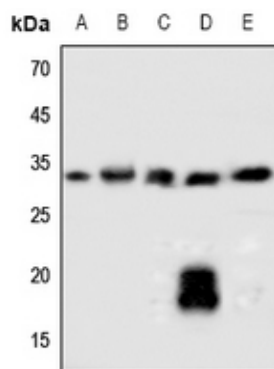
Tissue Location

High expression in heart, placenta, lung, kidney and prostate. Predominantly expressed in pulmonary epithelia cells, specifically type II pneumocytes.

Background

KLH-conjugated synthetic peptide encompassing a sequence within the center region of human SOCS2. The exact sequence is proprietary.

Images



Western blot analysis of SOCS2 expression in HEK293T (A), Hela (B), mouse lung (C), mouse liver (D), rat liver (E) whole cell lysates.

Please note: All products are 'FOR RESEARCH USE ONLY. NOT FOR USE IN DIAGNOSTIC OR THERAPEUTIC PROCEDURES'.