

Anti-DR3 Antibody

Rabbit polyclonal antibody to DR3

Catalog # AP59753

Product Information

Application	WB
Primary Accession	Q93038
Reactivity	Human
Host	Rabbit
Clonality	Polyclonal
Calculated MW	45385

Additional Information

Gene ID	8718
Other Names	APO3; DDR3; DR3; TNFRSF12; WSL; WSL1; Tumor necrosis factor receptor superfamily member 25; Apo-3; Apoptosis-inducing receptor AIR; Apoptosis-mediating receptor DR3; Apoptosis-mediating receptor TRAMP; Death receptor 3; Lymphocyte-associated receptor of death; LARD; Protein WSL; Protein WSL-1
Target/Specificity	KLH-conjugated synthetic peptide encompassing a sequence within the center region of human DR3. The exact sequence is proprietary.
Dilution	WB~~WB (1/500 - 1/1000)
Format	Liquid in 0.42% Potassium phosphate, 0.87% Sodium chloride, pH 7.3, 30% glycerol, and 0.09% (W/V) sodium azide.
Storage	Store at -20 °C.Stable for 12 months from date of receipt

Protein Information

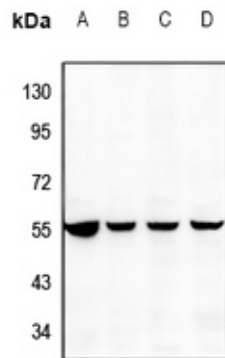
Name	TNFRSF25
Synonyms	APO3, DDR3, DR3, TNFRSF12, WSL, WSL1
Function	Receptor for TNFSF12/APO3L/TWEAK. Interacts directly with the adapter TRADD. Mediates activation of NF-kappa-B and induces apoptosis. May play a role in regulating lymphocyte homeostasis.
Cellular Location	[Isoform 1]: Cell membrane; Single-pass type I membrane protein [Isoform 9]: Cell membrane; Single-pass type I membrane protein [Isoform 3]: Secreted. [Isoform 5]: Secreted. [Isoform 7]: Secreted. [Isoform 10]: Secreted.
Tissue Location	Abundantly expressed in thymocytes and lymphocytes. Detected in

lymphocyte-rich tissues such as thymus, colon, intestine, and spleen. Also found in the prostate

Background

KLH-conjugated synthetic peptide encompassing a sequence within the center region of human DR3. The exact sequence is proprietary.

Images



Western blot analysis of DR3 expression in HEK293T (A), HCT116 (B), PC3 (C), U87MG (D) whole cell lysates.

Please note: All products are 'FOR RESEARCH USE ONLY. NOT FOR USE IN DIAGNOSTIC OR THERAPEUTIC PROCEDURES'.