

# Anti-MRP3 Antibody

Rabbit polyclonal antibody to MRP3

Catalog # AP59752

## Product Information

Application	WB, IP
Primary Accession	<a href="#">O15438</a>
Reactivity	Human
Host	Rabbit
Clonality	Polyclonal
Calculated MW	169343

## Additional Information

Gene ID	8714
Other Names	CMOAT2; MLP2; MRP3; Canalicular multispecific organic anion transporter 2; ATP-binding cassette sub-family C member 3; Multi-specific organic anion transporter D; MOAT-D; Multidrug resistance-associated protein 3
Target/Specificity	KLH-conjugated synthetic peptide encompassing a sequence within the center region of human MRP3. The exact sequence is proprietary.
Dilution	WB~~WB (1/500 - 1/1000), IP (1/10 - 1/100) IP~~N/A
Format	Liquid in 0.42% Potassium phosphate, 0.87% Sodium chloride, pH 7.3, 30% glycerol, and 0.09% (W/V) sodium azide.
Storage	Store at -20 °C.Stable for 12 months from date of receipt

## Protein Information

Name	ABCC3 ( <a href="#">HGNC:54</a> )
Synonyms	CMOAT2, MLP2, MRP3
Function	ATP-dependent transporter of the ATP-binding cassette (ABC) family that binds and hydrolyzes ATP to enable active transport of various substrates including many drugs, toxicants and endogenous compound across cell membranes (PubMed: <a href="#">10359813</a> , PubMed: <a href="#">11581266</a> , PubMed: <a href="#">15083066</a> ). Transports glucuronide conjugates such as bilirubin diglucuronide, estradiol-17-beta-o-glucuronide and GSH conjugates such as leukotriene C4 (LTC4) (PubMed: <a href="#">11581266</a> , PubMed: <a href="#">15083066</a> ). Transports also various bile salts (taurocholate, glycocholate, taurochenodeoxycholate-3-sulfate, tauroolithocholate- 3-sulfate) (By similarity). Does not contribute substantially to bile salt physiology but provides an alternative route for the export of bile acids and glucuronides from cholestatic hepatocytes (By similarity). May

contribute to regulate the transport of organic compounds in testes across the blood-testis-barrier (Probable). Can confer resistance to various anticancer drugs, methotrexate, tenoposide and etoposide, by decreasing accumulation of these drugs in cells (PubMed:[10359813](#), PubMed:[11581266](#)).

#### Cellular Location

Basolateral cell membrane; Multi-pass membrane protein. Basal cell membrane; Multi-pass membrane protein. Note=Localized to the basolateral membrane of enterocytes (PubMed:28408210). Localized to the basal membrane of Sertoli cells (PubMed:35307651).

#### Tissue Location

Mainly expressed in the liver. Also expressed in small intestine, colon, prostate, testis, brain and at a lower level in the kidney. In testis, localized to peritubular myoid cells, Leydig cells, along the basal membrane of Sertoli cells and moderately in the adluminal compartment of the seminiferous tubules (PubMed:35307651)

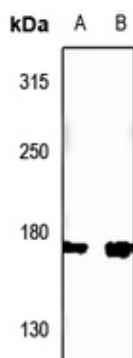
## Background

---

KLH-conjugated synthetic peptide encompassing a sequence within the center region of human MRP3. The exact sequence is proprietary.

## Images

---



Western blot analysis of MRP3 expression in HepG2 (A), LO2 (B) whole cell lysates.

Please note: All products are 'FOR RESEARCH USE ONLY. NOT FOR USE IN DIAGNOSTIC OR THERAPEUTIC PROCEDURES'.