

Anti-EP4 Antibody

Rabbit polyclonal antibody to EP4
Catalog # AP59681

Product Information

Application	WB
Primary Accession	P35408
Reactivity	Human, Mouse, Monkey
Host	Rabbit
Clonality	Polyclonal
Calculated MW	53119

Additional Information

Gene ID	5734
Other Names	PTGER2; Prostaglandin E2 receptor EP4 subtype; PGE receptor EP4 subtype; PGE2 receptor EP4 subtype; Prostanoid EP4 receptor
Target/Specificity	Recognizes endogenous levels of EP4 protein.
Dilution	WB~~WB (1/500 - 1/1000)
Format	Liquid in 0.42% Potassium phosphate, 0.87% Sodium chloride, pH 7.3, 30% glycerol, and 0.09% (W/V) sodium azide.
Storage	Store at -20 °C.Stable for 12 months from date of receipt

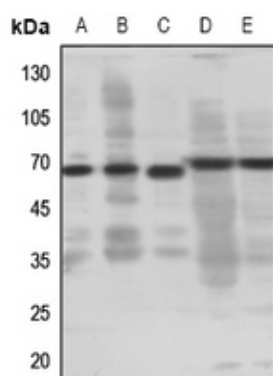
Protein Information

Name	PTGER4
Synonyms	PTGER2
Function	Receptor for prostaglandin E2 (PGE2). The activity of this receptor is mediated by G(s) proteins that stimulate adenylate cyclase. Has a relaxing effect on smooth muscle. May play an important role in regulating renal hemodynamics, intestinal epithelial transport, adrenal aldosterone secretion, and uterine function.
Cellular Location	Cell membrane; Multi-pass membrane protein.
Tissue Location	High in intestine and in peripheral blood mononuclear cells; low in lung, kidney, thymus, uterus, vasculature and brain. Not found in liver, heart, retina or skeletal muscle

Background

KLH-conjugated synthetic peptide encompassing a sequence within the center region of human EP4. The exact sequence is proprietary.

Images



Western blot analysis of EP4 expression in HEK293T (A), Hela (B), H1688 (C), mouse lung (D), mouse kidney (E) whole cell lysates.

Please note: All products are 'FOR RESEARCH USE ONLY. NOT FOR USE IN DIAGNOSTIC OR THERAPEUTIC PROCEDURES'.