

Anti-Peripherin Antibody

Rabbit polyclonal antibody to Peripherin

Catalog # AP59677

Product Information

Application	WB
Primary Accession	P41219
Reactivity	Human, Rat, Monkey
Host	Rabbit
Clonality	Polyclonal
Calculated MW	53651

Additional Information

Gene ID	5630
Other Names	NEF4; PRPH1; Peripherin; Neurofilament 4
Target/Specificity	KLH-conjugated synthetic peptide encompassing a sequence within the C-term region of human Peripherin. The exact sequence is proprietary.
Dilution	WB~~WB (1/500 - 1/1000)
Format	Liquid in 0.42% Potassium phosphate, 0.87% Sodium chloride, pH 7.3, 30% glycerol, and 0.09% (W/V) sodium azide.
Storage	Store at -20 °C.Stable for 12 months from date of receipt

Protein Information

Name	PRPH
Synonyms	NEF4, PRPH1
Function	Class-III neuronal intermediate filament protein (By similarity). May form an independent structural network without the involvement of other neurofilaments or may cooperate with the neuronal intermediate filament proteins NEFL, NEFH, NEFM and INA to form a filamentous network (PubMed: 15322088 , PubMed: 15446584). Assembly of the neuronal intermediate filaments may be regulated by RAB7A (By similarity). Plays a role in the development of unmyelinated sensory neurons (By similarity). May be involved in axon elongation and axon regeneration after injury (By similarity). Inhibits neurite extension in type II spiral ganglion neurons in the cochlea (By similarity).
Cellular Location	Cytoplasm, cytoskeleton. Cell projection, axon {ECO:0000250 UniProtKB:P15331}. Perikaryon

{ECO:0000250|UniProtKB:P15331}

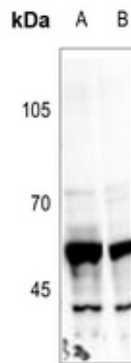
Tissue Location

Expressed in the neurons of the outer hair cells in the organ of Corti and to a lesser extent in type I spiral ganglion cells.

Background

KLH-conjugated synthetic peptide encompassing a sequence within the C-term region of human Peripherin. The exact sequence is proprietary.

Images



Western blot analysis of Peripherin expression in Hela (A), PC12 (B) whole cell lysates.

Please note: All products are 'FOR RESEARCH USE ONLY. NOT FOR USE IN DIAGNOSTIC OR THERAPEUTIC PROCEDURES'.