

# Anti-PLC gamma 2 (pY1217) Antibody

Rabbit polyclonal antibody to PLC gamma 2 (pY1217)

Catalog # AP59665

## Product Information

Application	WB
Primary Accession	<a href="#">P16885</a>
Other Accession	<a href="#">Q8CIH5</a>
Reactivity	Human, Mouse, Rat, Monkey
Host	Rabbit
Clonality	Polyclonal
Calculated MW	147870

## Additional Information

Gene ID	5336
Other Names	1-phosphatidylinositol 4, 5-bisphosphate phosphodiesterase gamma-2; Phosphoinositide phospholipase C-gamma-2; Phospholipase C-IV; PLC-IV; Phospholipase C-gamma-2; PLC-gamma-2
Target/Specificity	KLH-conjugated synthetic peptide encompassing a sequence within the C-term region of human PLC gamma 2. The exact sequence is proprietary.
Dilution	WB~~WB (1/500 - 1/1000)
Format	Liquid in 0.42% Potassium phosphate, 0.87% Sodium chloride, pH 7.3, 30% glycerol, and 0.09% (W/V) sodium azide.
Storage	Store at -20 °C.Stable for 12 months from date of receipt

## Protein Information

Name	PLCG2 ( <a href="#">HGNC:9066</a> )
Function	The production of the second messenger molecules diacylglycerol (DAG) and inositol 1,4,5-trisphosphate (IP3) is mediated by activated phosphatidylinositol-specific phospholipase C enzymes. It is a crucial enzyme in transmembrane signaling.
Cellular Location	Membrane raft {ECO:0000250   UniProtKB:Q8CIH5}.

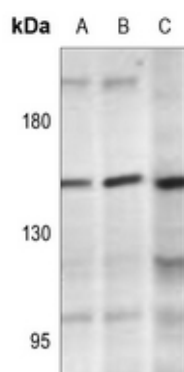
## Background

KLH-conjugated synthetic peptide encompassing a sequence within the C-term region of human PLC gamma

2. The exact sequence is proprietary.

## Images

---



Western blot analysis of PLC gamma 2 (pY1217) expression in HCT116-EGF (A), Myla2059 (B) whole cell lysates.

Please note: All products are 'FOR RESEARCH USE ONLY. NOT FOR USE IN DIAGNOSTIC OR THERAPEUTIC PROCEDURES'.