

# Anti-RKIP Antibody

Rabbit polyclonal antibody to RKIP  
Catalog # AP59648

## Product Information

---

<b>Application</b>	WB, IF/IC
<b>Primary Accession</b>	<a href="#">P30086</a>
<b>Other Accession</b>	<a href="#">P70296</a>
<b>Reactivity</b>	Human, Mouse, Rat
<b>Host</b>	Rabbit
<b>Clonality</b>	Polyclonal

## Additional Information

---

<b>Other Names</b>	PBP; PEBP; Phosphatidylethanolamine-binding protein 1; PEBP-1; HCNPPp; Neuropolypeptide h3; Prostatic-binding protein; Raf kinase inhibitor protein; RKIP
<b>Target/Specificity</b>	KLH-conjugated synthetic peptide encompassing a sequence within the center region of human RKIP. The exact sequence is proprietary.
<b>Dilution</b>	WB~~WB (1/500 - 1/1000), IF/IC (1/100 - 1/500) IF/IC~~N/A
<b>Format</b>	Liquid in 0.42% Potassium phosphate, 0.87% Sodium chloride, pH 7.3, 30% glycerol, and 0.09% (W/V) sodium azide.
<b>Storage</b>	Store at -20 °C. Stable for 12 months from date of receipt

## Protein Information

---

### Background

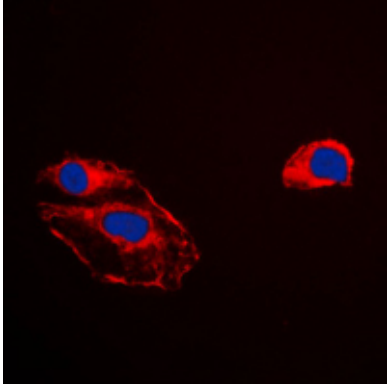
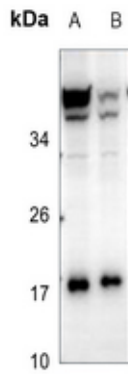
---

KLH-conjugated synthetic peptide encompassing a sequence within the center region of human RKIP. The exact sequence is proprietary.

### Images

---

Western blot analysis of RKIP expression in HEK293T (A), HepG2 (B) whole cell lysates.



Immunofluorescent analysis of RKIP staining in HepG2 cells. Formalin-fixed cells were permeabilized with 0.1% Triton X-100 in TBS for 5-10 minutes and blocked with 3% BSA-PBS for 30 minutes at room temperature. Cells were probed with the primary antibody in 3% BSA-PBS and incubated overnight at 4 °C in a humidified chamber. Cells were washed with PBST and incubated with a DyLight 594-conjugated secondary antibody (red) in PBS at room temperature in the dark. DAPI was used to stain the cell nuclei (blue).

Please note: All products are 'FOR RESEARCH USE ONLY. NOT FOR USE IN DIAGNOSTIC OR THERAPEUTIC PROCEDURES'.