

# Anti-IKB beta Antibody

Rabbit polyclonal antibody to IKB beta  
Catalog # AP59638

## Product Information

---

Application	WB
Primary Accession	<a href="#">Q15653</a>
Other Accession	<a href="#">Q60778</a>
Reactivity	Human, Mouse, Rat, Bovine
Host	Rabbit
Clonality	Polyclonal
Calculated MW	37771

## Additional Information

---

Gene ID	4793
Other Names	IKBB; TRIP9; NF-kappa-B inhibitor beta; NF-kappa-BIB; I-kappa-B-beta; Ikb-B; Ikb-beta; IkappaBbeta; Thyroid receptor-interacting protein 9; TR-interacting protein 9; TRIP-9
Target/Specificity	KLH-conjugated synthetic peptide encompassing a sequence within the N-term region of human IKB beta. The exact sequence is proprietary.
Dilution	WB~~WB (1/500 - 1/1000)
Format	Liquid in 0.42% Potassium phosphate, 0.87% Sodium chloride, pH 7.3, 30% glycerol, and 0.09% (W/V) sodium azide.
Storage	Store at -20 °C.Stable for 12 months from date of receipt

## Protein Information

---

Name	NFKBIB
Synonyms	IKBB, TRIP9
Function	Inhibits NF-kappa-B by complexing with and trapping it in the cytoplasm. However, the unphosphorylated form resynthesized after cell stimulation is able to bind NF-kappa-B allowing its transport to the nucleus and protecting it to further NFKBIA-dependent inactivation. Association with inhibitor kappa B-interacting NKIRAS1 and NKIRAS2 prevent its phosphorylation rendering it more resistant to degradation, explaining its slower degradation.
Cellular Location	Cytoplasm. Nucleus.  Expressed in all tissues examined.

## Tissue Location

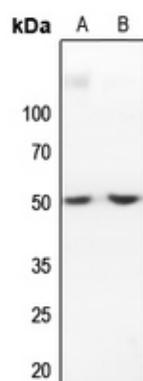
## Background

---

KLH-conjugated synthetic peptide encompassing a sequence within the N-term region of human IKB beta. The exact sequence is proprietary.

## Images

---



Western blot analysis of IKB beta expression in mouse liver (A), rat liver (B) whole cell lysates.

Please note: All products are 'FOR RESEARCH USE ONLY. NOT FOR USE IN DIAGNOSTIC OR THERAPEUTIC PROCEDURES'.