

Anti-CD122 Antibody

Rabbit polyclonal antibody to CD122

Catalog # AP59587

Product Information

Application	WB, IP
Primary Accession	P14784
Reactivity	Human, Rat
Host	Rabbit
Clonality	Polyclonal
Calculated MW	61117

Additional Information

Gene ID	3560
Other Names	Interleukin-2 receptor subunit beta; IL-2 receptor subunit beta; IL-2R subunit beta; IL-2RB; High affinity IL-2 receptor subunit beta; p70-75; p75; CD122
Target/Specificity	KLH-conjugated synthetic peptide encompassing a sequence within the N-term region of human CD122. The exact sequence is proprietary.
Dilution	WB~~WB (1/500 - 1/1000), IP (1/10 - 1/100) IP~~N/A
Format	Liquid in 0.42% Potassium phosphate, 0.87% Sodium chloride, pH 7.3, 30% glycerol, and 0.09% (W/V) sodium azide.
Storage	Store at -20 °C.Stable for 12 months from date of receipt

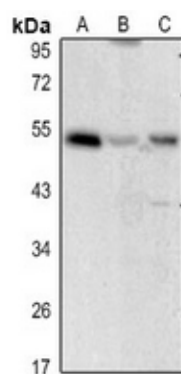
Protein Information

Name	IL2RB (HGNC:6009)
Function	Receptor for interleukin-2. This beta subunit is involved in receptor mediated endocytosis and transduces the mitogenic signals of IL2. Probably in association with IL15RA, involved in the stimulation of neutrophil phagocytosis by IL15 (PubMed: 15123770 , PubMed: 31040185).
Cellular Location	Cell membrane; Single-pass type I membrane protein

Background

KLH-conjugated synthetic peptide encompassing a sequence within the N-term region of human CD122. The exact sequence is proprietary.

Images



Western blot analysis of CD122 expression in HEK293T (A), HeLa (B), rat liver (C) whole cell lysates.

Please note: All products are 'FOR RESEARCH USE ONLY. NOT FOR USE IN DIAGNOSTIC OR THERAPEUTIC PROCEDURES'.