

# Anti-GYS1 Antibody

Rabbit polyclonal antibody to GYS1

Catalog # AP59576

## Product Information

---

Application	WB
Primary Accession	<a href="#">P13807</a>
Other Accession	<a href="#">Q9Z1E4</a>
Reactivity	Human, Mouse, Rat, Rabbit, Pig, Bovine
Host	Rabbit
Clonality	Polyclonal
Calculated MW	83786

## Additional Information

---

Gene ID	2997
Other Names	GYS; Glycogen [starch] synthase, muscle
Target/Specificity	KLH-conjugated synthetic peptide encompassing a sequence within the C-term region of human GYS1. The exact sequence is proprietary.
Dilution	WB~~WB (1/500 - 1/1000)
Format	Liquid in 0.42% Potassium phosphate, 0.87% Sodium chloride, pH 7.3, 30% glycerol, and 0.09% (W/V) sodium azide.
Storage	Store at -20 °C.Stable for 12 months from date of receipt

## Protein Information

---

Name	GYS1 ( <a href="#">HGNC:4706</a> )
Synonyms	GYS
Function	Glycogen synthase participates in the glycogen biosynthetic process along with glycogenin and glycogen branching enzyme. Extends the primer composed of a few glucose units formed by glycogenin by adding new glucose units to it. In this context, glycogen synthase transfers the glycosyl residue from UDP-Glc to the non-reducing end of alpha-1,4-glucan.
Tissue Location	Expressed in skeletal muscle and most other cell types where glycogen is present.

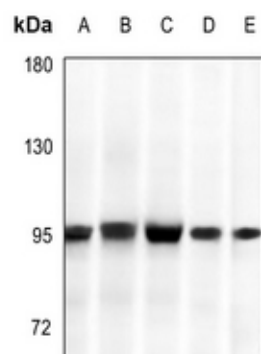
## Background

---

KLH-conjugated synthetic peptide encompassing a sequence within the C-term region of human GYS1. The exact sequence is proprietary.

## Images

---



Western blot analysis of GYS1 expression in HEK293T (A), LO2 (B), HepG2 (C), AML12 (D), H9C2 (E) whole cell lysates.

Please note: All products are 'FOR RESEARCH USE ONLY. NOT FOR USE IN DIAGNOSTIC OR THERAPEUTIC PROCEDURES'.