

# Anti-GCLC Antibody

Rabbit polyclonal antibody to GCLC  
Catalog # AP59565

## Product Information

---

Application	WB
Primary Accession	<a href="#">P48506</a>
Other Accession	<a href="#">P97494</a>
Reactivity	Human, Mouse, Rat, Zebrafish, Bovine
Host	Rabbit
Clonality	Polyclonal
Calculated MW	72766

## Additional Information

---

Gene ID	2729
Other Names	GLCL; GLCLC; Glutamate--cysteine ligase catalytic subunit; GCS heavy chain; Gamma-ECS; Gamma-glutamylcysteine synthetase
Target/Specificity	KLH-conjugated synthetic peptide encompassing a sequence within the center region of human GCLC. The exact sequence is proprietary.
Dilution	WB~~WB (1/500 - 1/1000)
Format	Liquid in 0.42% Potassium phosphate, 0.87% Sodium chloride, pH 7.3, 30% glycerol, and 0.09% (W/V) sodium azide.
Storage	Store at -20 °C.Stable for 12 months from date of receipt

## Protein Information

---

Name	GCLC ( <a href="#">HGNC:4311</a> )
Synonyms	GLCL, GLCLC
Function	Catalyzes the ATP-dependent ligation of L-glutamate and L- cysteine and participates in the first and rate-limiting step in glutathione biosynthesis.

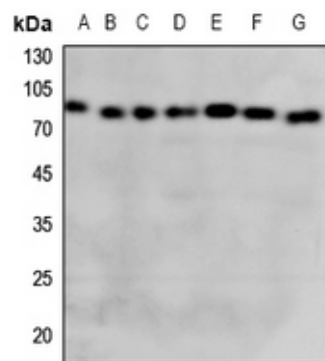
## Background

---

KLH-conjugated synthetic peptide encompassing a sequence within the center region of human GCLC. The exact sequence is proprietary.

## Images

---



Western blot analysis of GCLC expression in HEK293T (A), Hela (B), H460 (C), mouse lung (D), mouse liver (E), mouse kidney (F), rat liver (G) whole cell lysates.

Please note: All products are 'FOR RESEARCH USE ONLY. NOT FOR USE IN DIAGNOSTIC OR THERAPEUTIC PROCEDURES'.