

Anti-Galactose Kinase Antibody

Rabbit polyclonal antibody to Galactose Kinase

Catalog # AP59563

Product Information

Application	WB, IF/IC
Primary Accession	P51570
Other Accession	Q9R0N0
Reactivity	Human, Mouse, Rat, Drosophila
Host	Rabbit
Clonality	Polyclonal
Calculated MW	42272

Additional Information

Gene ID	2584
Other Names	GALK; Galactokinase; Galactose kinase
Target/Specificity	KLH-conjugated synthetic peptide encompassing a sequence within the N-term region of human Galactose Kinase. The exact sequence is proprietary.
Dilution	WB~~WB (1/500 - 1/1000), IF/IC (1/100 - 1/500) IF/IC~~N/A
Format	Liquid in 0.42% Potassium phosphate, 0.87% Sodium chloride, pH 7.3, 30% glycerol, and 0.09% (W/V) sodium azide.
Storage	Store at -20 °C.Stable for 12 months from date of receipt

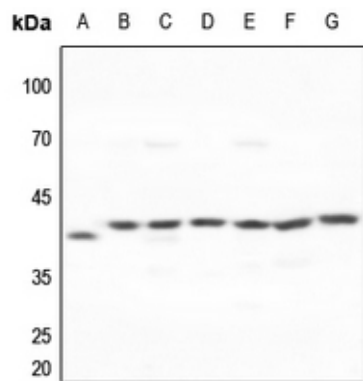
Protein Information

Name	GALK1 (HGNC:4118)
Synonyms	GALK
Function	Catalyzes the transfer of a phosphate from ATP to alpha-D- galactose and participates in the first committed step in the catabolism of galactose.

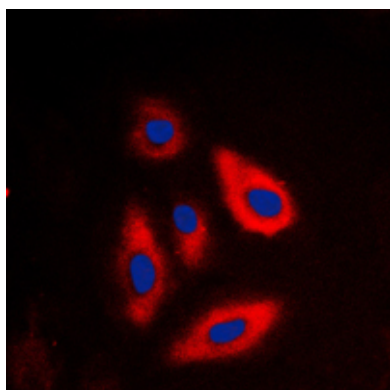
Background

KLH-conjugated synthetic peptide encompassing a sequence within the N-term region of human Galactose Kinase. The exact sequence is proprietary.

Images



Western blot analysis of Galactose Kinase expression in HEK293T (A), HeLa (B), mouse lung (C), mouse liver (D), mouse kidney (E), rat liver (F), rat kidney (G) whole cell lysates.



Immunofluorescent analysis of Galactose Kinase staining in HepG2 cells. Formalin-fixed cells were permeabilized with 0.1% Triton X-100 in TBS for 5-10 minutes and blocked with 3% BSA-PBS for 30 minutes at room temperature. Cells were probed with the primary antibody in 3% BSA-PBS and incubated overnight at 4 °C in a humidified chamber. Cells were washed with PBST and incubated with a DyLight 594-conjugated secondary antibody (red) in PBS at room temperature in the dark. DAPI was used to stain the cell nuclei (blue).

Please note: All products are 'FOR RESEARCH USE ONLY. NOT FOR USE IN DIAGNOSTIC OR THERAPEUTIC PROCEDURES'.