

Anti-EPB41L2 Antibody

Rabbit polyclonal antibody to EPB41L2

Catalog # AP59546

Product Information

Application	WB, IHC
Primary Accession	O43491
Other Accession	O70318
Reactivity	Human, Mouse, Rat
Host	Rabbit
Clonality	Polyclonal
Calculated MW	112588

Additional Information

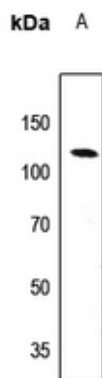
Gene ID	2037
Other Names	Band 4.1-like protein 2; Generally expressed protein 4.1; 4.1G
Target/Specificity	KLH-conjugated synthetic peptide encompassing a sequence within the center region of human EPB41L2. The exact sequence is proprietary.
Dilution	WB~~WB (1/500 - 1/1000), IHC (1/100 - 1/200) IHC~~WB (1/500 - 1/1000), IHC (1/100 - 1/200)
Format	Liquid in 0.42% Potassium phosphate, 0.87% Sodium chloride, pH 7.3, 30% glycerol, and 0.09% (W/V) sodium azide.
Storage	Store at -20 °C.Stable for 12 months from date of receipt

Protein Information

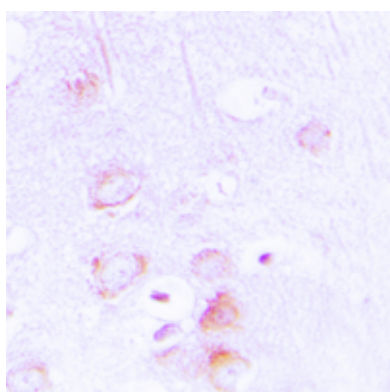
Name	EPB41L2 (HGNC:3379)
Function	Required for dynein-dynactin complex and NUMA1 recruitment at the mitotic cell cortex during anaphase (PubMed: 23870127).
Cellular Location	Cytoplasm, cytoskeleton. Cytoplasm, cell cortex. Cell membrane
Tissue Location	Widely expressed.

Background

KLH-conjugated synthetic peptide encompassing a sequence within the center region of human EPB41L2. The exact sequence is proprietary.



Western blot analysis of EPB41L2 expression in mouse kidney (A) whole cell lysates.



Immunohistochemical analysis of EPB41L2 staining in human brain formalin fixed paraffin embedded tissue section. The section was pre-treated using heat mediated antigen retrieval with sodium citrate buffer (pH 6.0). The section was then incubated with the antibody at room temperature and detected using an HRP conjugated compact polymer system. DAB was used as the chromogen. The section was then counterstained with haematoxylin and mounted with DPX.

Please note: All products are 'FOR RESEARCH USE ONLY. NOT FOR USE IN DIAGNOSTIC OR THERAPEUTIC PROCEDURES'.