

Anti-ELF4 Antibody

Rabbit polyclonal antibody to ELF4

Catalog # AP59545

Product Information

Application	WB
Primary Accession	Q99607
Other Accession	Q9Z2U4
Reactivity	Human, Mouse, Rat, Pig
Host	Rabbit
Clonality	Polyclonal
Calculated MW	70730

Additional Information

Gene ID	2000
Other Names	ELFR; MEF; ETS-related transcription factor Elf-4; E74-like factor 4; Myeloid Elf-1-like factor
Target/Specificity	KLH-conjugated synthetic peptide encompassing a sequence within the center region of human ELF4. The exact sequence is proprietary.
Dilution	WB~~WB (1/500 - 1/1000)
Format	Liquid in 0.42% Potassium phosphate, 0.87% Sodium chloride, pH 7.3, 30% glycerol, and 0.09% (W/V) sodium azide.
Storage	Store at -20 °C.Stable for 12 months from date of receipt

Protein Information

Name	ELF4 {ECO:0000312 EMBL:CAI42882.1}
Function	Transcriptional activator that binds to DNA sequences containing the consensus 5'-WGGA-3'. Transactivates promoters of the hematopoietic growth factor genes CSF2, IL3, IL8, and of the bovine lysozyme gene. Acts synergistically with RUNX1 to transactivate the IL3 promoter (By similarity). Transactivates the PRF1 promoter in natural killer (NK) cells and CD8+ T cells (PubMed: 34326534). Plays a role in the development and function of NK and NK T-cells and in innate immunity. Controls the proliferation and homing of CD8+ T-cells via the Kruppel-like factors KLF4 and KLF2 (By similarity). Controls cell senescence in a p53-dependent manner. Can also promote cellular transformation through inhibition of the p16 pathway. Is a transcriptional regulator of inflammation, controlling T-helper 17 (Th17) cells and macrophage inflammatory responses. Required for sustained transcription of anti-inflammatory genes, including IL1RN (PubMed: 34326534 ,

PubMed:[35266071](#)). Is a negative regulator of pro- inflammatory cytokines expression including IL17A, IL1B, IL6, TNFA and CXCL1 (PubMed:[34326534](#), PubMed:[35266071](#)). Down-regulates expression of TREM1, a cell surface receptor involved in the amplification of inflammatory responses (By similarity) (PubMed:[34326534](#), PubMed:[35266071](#)).

Cellular Location

Nucleus, PML body. Note=Accumulation into PML nuclear bodies is mediated by PML

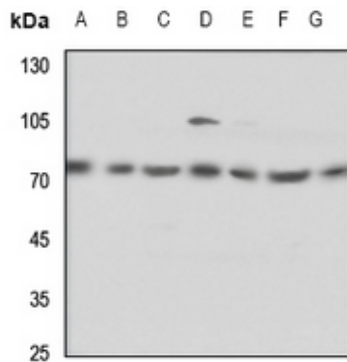
Tissue Location

Abundantly expressed in the placenta and in a variety of myeloid leukemia cell lines. Moderate levels of expression in heart, lung, spleen, thymus, peripheral blood lymphocytes, ovary and colon. Lower levels of expression in Jurkat T-cells and other T-cell lines and no expression in brain.

Background

KLH-conjugated synthetic peptide encompassing a sequence within the center region of human ELF4. The exact sequence is proprietary.

Images



Western blot analysis of ELF4 expression in HEK293T (A), Hela (B), H1688 (C), mouse lung (D), mouse liver (E), rat lung (F), rat liver (G) whole cell lysates.

Please note: All products are 'FOR RESEARCH USE ONLY. NOT FOR USE IN DIAGNOSTIC OR THERAPEUTIC PROCEDURES'.