

Anti-CYB5R3 Antibody

Rabbit polyclonal antibody to CYB5R3
Catalog # AP59536

Product Information

Application	WB, IP, IHC
Primary Accession	P00387
Reactivity	Human, Mouse, Rat, Drosophila
Host	Rabbit
Clonality	Polyclonal

Additional Information

Other Names	DIA1; NADH-cytochrome b5 reductase 3; B5R; Cytochrome b5 reductase; Diaphorase-1
Target/Specificity	KLH-conjugated synthetic peptide encompassing a sequence within the center region of human CYB5R3. The exact sequence is proprietary.
Dilution	WB~~WB (1/500 - 1/1000), IHC (1/100 - 1/200), IP (1/10 - 1/100) IP~~N/A IHC~~WB (1/500 - 1/1000), IHC (1/100 - 1/200), IP (1/10 - 1/100)
Format	Liquid in 0.42% Potassium phosphate, 0.87% Sodium chloride, pH 7.3, 30% glycerol, and 0.09% (W/V) sodium azide.
Storage	Store at -20 °C. Stable for 12 months from date of receipt

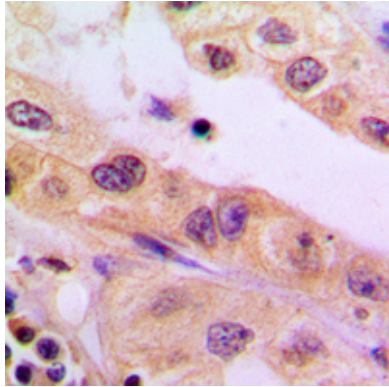
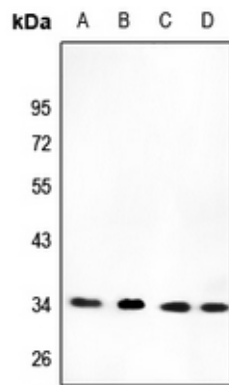
Protein Information

Background

KLH-conjugated synthetic peptide encompassing a sequence within the center region of human CYB5R3. The exact sequence is proprietary.

Images

Western blot analysis of CYB5R3 expression in MCF7 (A), A549 (B), mouse testis (C), rat testis (D) whole cell lysates.



Immunohistochemical analysis of CYB5R3 staining in human liver cancer formalin fixed paraffin embedded tissue section. The section was pre-treated using heat mediated antigen retrieval with sodium citrate buffer (pH 6.0). The section was then incubated with the antibody at room temperature and detected using an HRP conjugated compact polymer system. DAB was used as the chromogen. The section was then counterstained with haematoxylin and mounted with DPX.

Please note: All products are 'FOR RESEARCH USE ONLY. NOT FOR USE IN DIAGNOSTIC OR THERAPEUTIC PROCEDURES'.