

# Anti-Carboxypeptidase N 1 Antibody

Rabbit polyclonal antibody to Carboxypeptidase N 1

Catalog # AP59522

## Product Information

---

Application	WB
Primary Accession	<a href="#">P15169</a>
Reactivity	Human, Mouse, Rat
Host	Rabbit
Clonality	Polyclonal
Calculated MW	52286

## Additional Information

---

Gene ID	1369
Other Names	ACBP; Carboxypeptidase N catalytic chain; CPN; Anaphylatoxin inactivator; Arginine carboxypeptidase; Carboxypeptidase N polypeptide 1; Carboxypeptidase N small subunit; Kininase-1; Lysine carboxypeptidase; Plasma carboxypeptidase B; Serum carboxypeptidase N; SCPN
Target/Specificity	KLH-conjugated synthetic peptide encompassing a sequence within the C-term region of human Carboxypeptidase N 1. The exact sequence is proprietary.
Dilution	WB~~WB (1/500 - 1/1000)
Format	Liquid in 0.42% Potassium phosphate, 0.87% Sodium chloride, pH 7.3, 30% glycerol, and 0.09% (W/V) sodium azide.
Storage	Store at -20 °C.Stable for 12 months from date of receipt

## Protein Information

---

Name	CPN1
Synonyms	ACBP
Function	Protects the body from potent vasoactive and inflammatory peptides containing C-terminal Arg or Lys (such as kinins or anaphylatoxins) which are released into the circulation.
Cellular Location	Secreted, extracellular space.
Tissue Location	Synthesized in the liver and secreted in plasma.

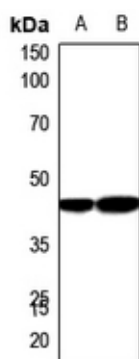
## Background

---

KLH-conjugated synthetic peptide encompassing a sequence within the C-term region of human Carboxypeptidase N 1. The exact sequence is proprietary.

## Images

---



Western blot analysis of Carboxypeptidase N 1 expression in mouse liver (A), rat liver (B) whole cell lysates.

Please note: All products are 'FOR RESEARCH USE ONLY. NOT FOR USE IN DIAGNOSTIC OR THERAPEUTIC PROCEDURES'.