

Anti-BST2 Antibody

Rabbit polyclonal antibody to BST2
Catalog # AP59491

Product Information

Application	WB
Primary Accession	Q10589
Other Accession	Q8R2Q8
Reactivity	Human, Mouse, Rat
Host	Rabbit
Clonality	Polyclonal

Additional Information

Other Names	Bone marrow stromal antigen 2; BST-2; HM1.24 antigen; Tetherin; CD317
Target/Specificity	KLH-conjugated synthetic peptide encompassing a sequence within the center region of human BST2. The exact sequence is proprietary.
Dilution	WB~~WB (1/500 - 1/1000)
Format	Liquid in 0.42% Potassium phosphate, 0.87% Sodium chloride, pH 7.3, 30% glycerol, and 0.09% (W/V) sodium azide.
Storage	Store at -20 °C. Stable for 12 months from date of receipt

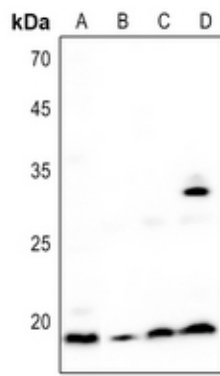
Protein Information

Background

KLH-conjugated synthetic peptide encompassing a sequence within the center region of human BST2. The exact sequence is proprietary.

Images

Western blot analysis of BST2 expression in Hela (A), mouse spleen (B), mouse lung (C), rat spleen (D) whole cell lysates.



Please note: All products are 'FOR RESEARCH USE ONLY. NOT FOR USE IN DIAGNOSTIC OR THERAPEUTIC PROCEDURES'.