

# Anti-ATF1 Antibody

Rabbit polyclonal antibody to ATF1

Catalog # AP59483

## Product Information

---

<b>Application</b>	WB, IP, IF/IC, IHC
<b>Primary Accession</b>	<a href="#">P18846</a>
<b>Other Accession</b>	<a href="#">P81269</a>
<b>Reactivity</b>	Human, Mouse, Rat, Bovine
<b>Host</b>	Rabbit
<b>Clonality</b>	Polyclonal
<b>Calculated MW</b>	29233

## Additional Information

---

<b>Gene ID</b>	466
<b>Other Names</b>	Cyclic AMP-dependent transcription factor ATF-1; cAMP-dependent transcription factor ATF-1; Activating transcription factor 1; Protein TREB36
<b>Target/Specificity</b>	KLH-conjugated synthetic peptide encompassing a sequence within the C-term region of human ATF1. The exact sequence is proprietary.
<b>Dilution</b>	WB~~WB (1/500 - 1/1000), IHC (1/100 - 1/200), IF/IC (1/100 - 1/500), IP (1/10 - 1/100) IP~~N/A IF/IC~~N/A IHC~~WB (1/500 - 1/1000), IHC (1/100 - 1/200), IF/IC (1/100 - 1/500), IP (1/10 - 1/100)
<b>Format</b>	Liquid in 0.42% Potassium phosphate, 0.87% Sodium chloride, pH 7.3, 30% glycerol, and 0.09% (W/V) sodium azide.
<b>Storage</b>	Store at -20 °C.Stable for 12 months from date of receipt

## Protein Information

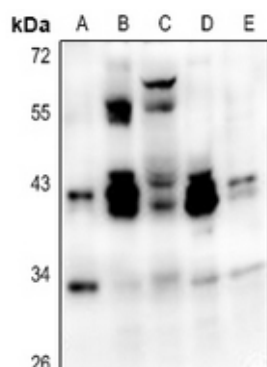
---

<b>Name</b>	ATF1
<b>Function</b>	This protein binds the cAMP response element (CRE) (consensus: 5'-GTGACGT[AC][AG]-3'), a sequence present in many viral and cellular promoters. Binds to the Tax-responsive element (TRE) of HTLV-I. Mediates PKA-induced stimulation of CRE-reporter genes. Represses the expression of FTH1 and other antioxidant detoxification genes. Triggers cell proliferation and transformation.
<b>Cellular Location</b>	Nucleus.

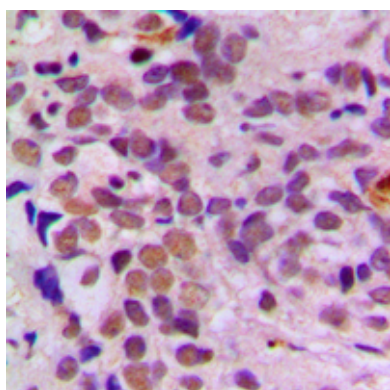
## Background

KLH-conjugated synthetic peptide encompassing a sequence within the C-term region of human ATF1. The exact sequence is proprietary.

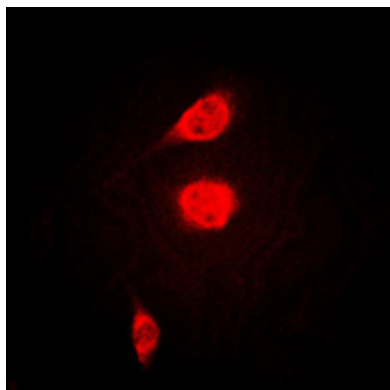
## Images



Western blot analysis of ATF1 expression in HCT116 (A), HEK293T (B), mouse kidney (C), PC12 (D), Panc1 (E) whole cell lysates.



Immunohistochemical analysis of ATF1 staining in human breast cancer formalin fixed paraffin embedded tissue section. The section was pre-treated using heat mediated antigen retrieval with sodium citrate buffer (pH 6.0). The section was then incubated with the antibody at room temperature and detected using an HRP conjugated compact polymer system. DAB was used as the chromogen. The section was then counterstained with haematoxylin and mounted with DPX.



Immunofluorescent analysis of ATF1 staining in KNRK cells. Formalin-fixed cells were permeabilized with 0.1% Triton X-100 in TBS for 5-10 minutes and blocked with 3% BSA-PBS for 30 minutes at room temperature. Cells were probed with the primary antibody in 3% BSA-PBS and incubated overnight at 4 °C in a humidified chamber. Cells were washed with PBST and incubated with a DyLight 594-conjugated secondary antibody (red) in PBS at room temperature in the dark.

Please note: All products are 'FOR RESEARCH USE ONLY. NOT FOR USE IN DIAGNOSTIC OR THERAPEUTIC PROCEDURES'.