

EGFR5 Polyclonal Antibody

Purified Rabbit Polyclonal Antibody (Pab)

Catalog # AP59390

Product Information

Application	WB, IHC-P, IHC-F, IF, ICC, E
Primary Accession	Q86T13
Reactivity	Rat
Host	Rabbit
Clonality	Polyclonal
Calculated MW	51636
Physical State	Liquid
Immunogen	KLH conjugated synthetic peptide derived from human EGFR5/CLEC14A
Epitope Specificity	221-320/490
Isotype	IgG
Purity	affinity purified by Protein A
Buffer	0.01M TBS (pH7.4) with 1% BSA, 0.02% Proclin300 and 50% Glycerol.
SUBCELLULAR LOCATION	Membrane; Single pass type I membrane protein.
SIMILARITY	Contains 1 C-type lectin domain.Contains 1 EGF-like domain.
Important Note	This product as supplied is intended for research use only, not for use in human, therapeutic or diagnostic applications.
Background Descriptions	This gene encodes a member of the C-type lectin/C-type lectin-like domain (CTL/CTLD) superfamily. Members of this family share a common protein fold and have diverse functions, such as cell adhesion, cell-cell signalling, glycoprotein turnover, and roles in inflammation and immune response. This family member plays a role in cell-cell adhesion and angiogenesis. It functions in filopodia formation, cell migration and tube formation. Due to its presence at higher levels in tumor endothelium than in normal tissue endothelium, it is considered to be a candidate for tumor vascular targeting.

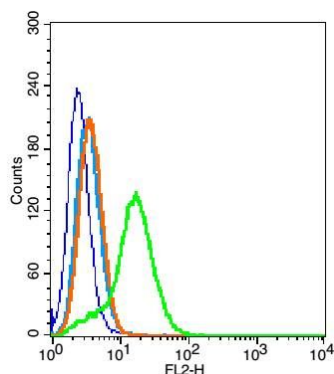
Additional Information

Gene ID	161198
Other Names	C-type lectin domain family 14 member A, Epidermal growth factor receptor 5, EGFR-5, CLEC14A, C14orf27, EGFR5
Dilution	WB=1:500-2000,IHC-P=1:100-500,IHC-F=1:100-500,ICC=1:100-500,IF=1:100-500,Flow-Cyt=1 µg/Test,ELISA=1:5000-10000
Format	0.01M TBS(pH7.4) with 1% BSA, 0.09% (W/V) sodium azide and 50% Glyce
Storage	Store at -20 °C for one year. Avoid repeated freeze/thaw cycles. When reconstituted in sterile pH 7.4 0.01M PBS or diluent of antibody the antibody is stable for at least two weeks at 2-4 °C.

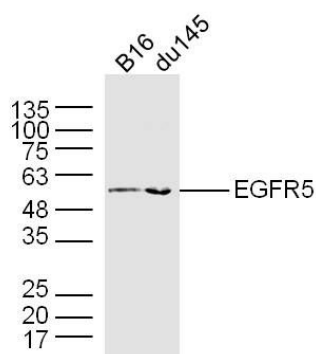
Protein Information

Name	CLEC14A
Synonyms	C14orf27, EGFR5
Cellular Location	Membrane; Single-pass type I membrane protein

Images



Blank control(blue):293T (fixed with 2% paraformaldehyde (10 min)).
Primary Antibody:Rabbit Anti-EGFR5 antibody(AP59390),
Dilution: 1 µg in 100 µL 1X PBS containing 0.5% BSA;
Isotype Control Antibody: Rabbit IgG(orange) ,used under the same conditions);
Secondary Antibody: Goat anti-rabbit IgG-PE(white blue), Dilution: 1:200 in 1 X PBS containing 0.5% BSA.



Sample:
B16 Cell (Mouse) Lysate at 40 ug
DU145 Cell (Human) Lysate at 40 ug
Primary: Anti-EGFR5 (AP59390) at 1/300 dilution
Secondary: IRDye800CW Goat Anti-Rabbit IgG at 1/20000 dilution
Predicted band size: 49 kD
Observed band size: 53 kD

Please note: All products are 'FOR RESEARCH USE ONLY. NOT FOR USE IN DIAGNOSTIC OR THERAPEUTIC PROCEDURES'.