

Copine-6 Polyclonal Antibody

Purified Rabbit Polyclonal Antibody (Pab)

Catalog # AP59296

Product Information

Application	IHC-P, IHC-F, IF, ICC, E
Primary Accession	O95741
Reactivity	Rat, Pig
Host	Rabbit
Clonality	Polyclonal
Calculated MW	61991
Physical State	Liquid
Immunogen	KLH conjugated synthetic peptide derived from human Copine-6
Epitope Specificity	221-320/557
Isotype	IgG
Purity	affinity purified by Protein A
Buffer	0.01M TBS (pH7.4) with 1% BSA, 0.02% Proclin300 and 50% Glycerol.
SIMILARITY	Belongs to the copine family. Contains 2 C2 domains. Contains 1 VWFA domain.
Important Note	This product as supplied is intended for research use only, not for use in human, therapeutic or diagnostic applications.
Background Descriptions	<p>Copine 6 is a 557 amino acid member of the copine family of evolutionarily conserved, soluble, calcium-dependent, membrane-binding proteins. Members of the copine family are involved in signal transduction and membrane trafficking. Arabidopsis thaliana mutants lacking copine proteins exhibit reduced cell number and smaller cell size, effects which may be due to a defect in vesicle fusion or transport. Copine 6 contains two N-terminal C2 domains and one C-terminal VWFA (von Willebrand factor A) domain, which is also referred to as the A domain or the core domain. As is characteristic of the copine family, copine 6 functions in membrane trafficking and is capable of binding phospholipids in a calcium-dependent manner. Copine 6 may also play a role in synaptic plasticity.</p>

Additional Information

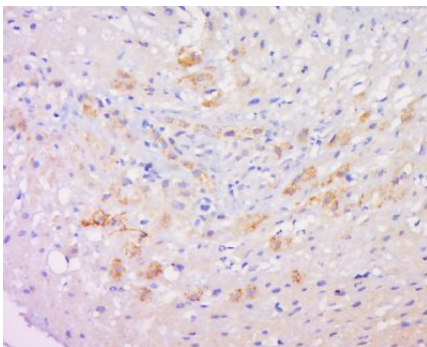
Gene ID	9362
Other Names	Copine-6, Copine VI, Neuronal-copine, N-copine, CPNE6 (HGNC:2319)
Dilution	IHC-P=1:100-500,IHC-F=1:100-500,ICC=1:100-500,IF=1:100-500,ELISA=1:5000-10000
Format	0.01M TBS(pH7.4) with 1% BSA, 0.09% (W/V) sodium azide and 50% Glyce
Storage	Store at -20 °C for one year. Avoid repeated freeze/thaw cycles. When reconstituted in sterile pH 7.4 0.01M PBS or diluent of antibody the antibody

is stable for at least two weeks at 2-4 °C.

Protein Information

Name	CPNE6 (HGNC:2319)
Function	Calcium-dependent phospholipid-binding protein that plays a role in calcium-mediated intracellular processes. Binds phospholipid membranes in a calcium-dependent manner (By similarity). Plays a role in dendrite formation by melanocytes (PubMed: 23999003).
Cellular Location	Cytoplasm {ECO:0000250 UniProtKB:Q9Z140}. Cell membrane {ECO:0000250 UniProtKB:Q9Z140}. Endosome {ECO:0000250 UniProtKB:Q9Z140}. Cytoplasmic vesicle, clathrin-coated vesicle {ECO:0000250 UniProtKB:Q9Z140}. Perikaryon {ECO:0000250 UniProtKB:Q9Z140}. Cell projection, dendrite {ECO:0000250 UniProtKB:Q9Z140}. Note=Mainly cytoplasmic in absence of calcium. Associated predominantly with membranes in presence of calcium. Translocates to the cell membrane in a calcium-dependent manner. Colocalized with transferrin in intracellular clathrin-coated membrane vesicles in a calcium-dependent manner {ECO:0000250 UniProtKB:Q9Z140}
Tissue Location	Widely expressed in the brain (PubMed:10403379, PubMed:12949241, PubMed:9645480). Expressed weakly in the kidney, liver and fetal heart (PubMed:12949241). Expressed in melanocytes (PubMed:23999003).

Images



Tissue/cell: human liver carcinoma; 4%
Paraformaldehyde-fixed and paraffin-embedded;
Antigen retrieval: citrate buffer (0.01M, pH 6.0), Boiling bathing for 15min; Block endogenous peroxidase by 3% Hydrogen peroxide for 30min; Blocking buffer (normal goat serum,C-0005) at 37°C for 20 min;
Incubation: Anti-Copine-6 Polyclonal Antibody, Unconjugated(AP59296) 1:500, overnight at 4°C, followed by conjugation to the secondary antibody(SP-0023) and DAB(C-0010) staining

Please note: All products are 'FOR RESEARCH USE ONLY. NOT FOR USE IN DIAGNOSTIC OR THERAPEUTIC PROCEDURES'.