

# C9orf86 Polyclonal Antibody

Purified Rabbit Polyclonal Antibody (Pab)

Catalog # AP59288

## Product Information

---

<b>Application</b>	WB, IHC-P, IHC-F, IF, ICC, E
<b>Primary Accession</b>	<a href="#">Q3YEC7</a>
<b>Reactivity</b>	Rat
<b>Host</b>	Rabbit
<b>Clonality</b>	Polyclonal
<b>Calculated MW</b>	79549
<b>Physical State</b>	Liquid
<b>Immunogen</b>	KLH conjugated synthetic peptide derived from human C9orf86
<b>Epitope Specificity</b>	631-729/729
<b>Isotype</b>	IgG
<b>Purity</b>	affinity purified by Protein A
<b>Buffer</b>	0.01M TBS (pH7.4) with 1% BSA, 0.02% Proclin300 and 50% Glycerol.
<b>SUBCELLULAR LOCATION</b>	Cytoplasmic and Nuclear. Note=Predominantly cytoplasmic. Proposed to shuttle between cytoplasm and nucleus.
<b>SIMILARITY</b>	Belongs to the small GTPase superfamily. Rab family.
<b>Post-translational modifications</b>	Isoform 1 is O-glycosylated, while other isoforms are not.
<b>Important Note</b>	This product as supplied is intended for research use only, not for use in human, therapeutic or diagnostic applications.
<b>Background Descriptions</b>	C9orf86 (Partner of ARF;PARF) binds p19(ARF), but not the p16(INK4A) isoform of CDKN2A. Knockdown of C9orf86 by RNA interference reduced the growth inhibitory activity of p19(ARF) and enhanced the rate of cell proliferation.

## Additional Information

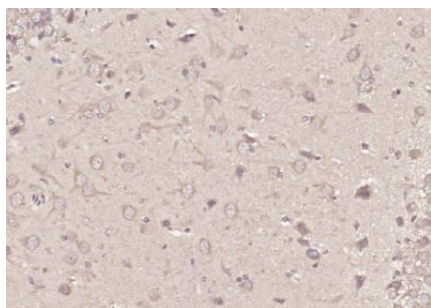
---

<b>Gene ID</b>	55684
<b>Other Names</b>	Rab-like protein 6, GTP-binding protein Parf, Partner of ARF, Rab-like protein 1, RBEL1, RABL6, C9orf86, PARF
<b>Dilution</b>	WB=1:500-2000,IHC-P=1:100-500,IHC-F=1:100-500,ICC=1:100-500,IF=1:100-500,ELISA=1:5000-10000
<b>Format</b>	0.01M TBS(pH7.4) with 1% BSA, 0.09% (W/V) sodium azide and 50% Glyce
<b>Storage</b>	Store at -20 °C for one year. Avoid repeated freeze/thaw cycles. When reconstituted in sterile pH 7.4 0.01M PBS or diluent of antibody the antibody is stable for at least two weeks at 2-4 °C.

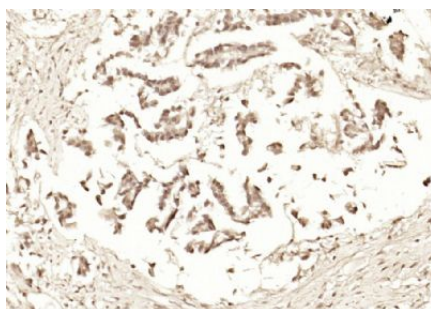
## Protein Information

<b>Name</b>	RABL6
<b>Synonyms</b>	C9orf86, PARF
<b>Function</b>	May enhance cellular proliferation. May reduce growth inhibitory activity of CDKN2A.
<b>Cellular Location</b>	[Isoform 1]: Cytoplasm. Note=Predominantly cytoplasmic (PubMed:17962191)

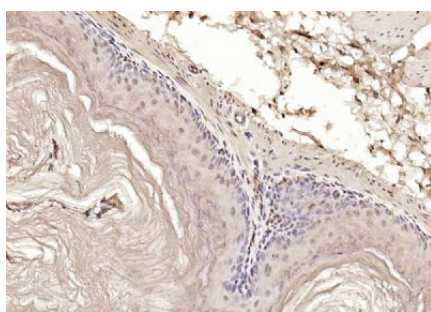
## Images



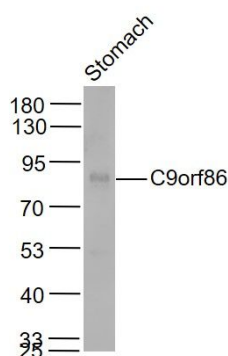
Paraformaldehyde-fixed, paraffin embedded (rat brain); Antigen retrieval by boiling in sodium citrate buffer (pH6.0) for 15min; Block endogenous peroxidase by 3% hydrogen peroxide for 20 minutes; Blocking buffer (normal goat serum) at 37°C for 30min; Antibody incubation with (C9orf86) Polyclonal Antibody, Unconjugated (AP59288) at 1:200 overnight at 4°C, followed by operating according to SP Kit(Rabbit) (sp-0023) instructions and DAB staining.



Paraformaldehyde-fixed, paraffin embedded (human gastric carcinoma); Antigen retrieval by boiling in sodium citrate buffer (pH6.0) for 15min; Block endogenous peroxidase by 3% hydrogen peroxide for 20 minutes; Blocking buffer (normal goat serum) at 37°C for 30min; Antibody incubation with (C9orf86) Polyclonal Antibody, Unconjugated (AP59288) at 1:200 overnight at 4°C, followed by operating according to SP Kit(Rabbit) (sp-0023) instructions and DAB staining.



Paraformaldehyde-fixed, paraffin embedded (mouse stomach); Antigen retrieval by boiling in sodium citrate buffer (pH6.0) for 15min; Block endogenous peroxidase by 3% hydrogen peroxide for 20 minutes; Blocking buffer (normal goat serum) at 37°C for 30min; Antibody incubation with (C9orf86) Polyclonal Antibody, Unconjugated (AP59288) at 1:200 overnight at 4°C, followed by operating according to SP Kit(Rabbit) (sp-0023) instructions and DAB staining.



### Sample:

Stomach (Mouse) Lysate at 40 ug

Primary: Anti- C9orf86 (AP59288) at 1/1000 dilution

Secondary: IRDye800CW Goat Anti-Rabbit IgG at 1/20000 dilution

Predicted band size: 80 kD

Observed band size: 80 kD

Please note: All products are 'FOR RESEARCH USE ONLY. NOT FOR USE IN DIAGNOSTIC OR THERAPEUTIC PROCEDURES'.