

RNF70 Polyclonal Antibody

Purified Rabbit Polyclonal Antibody (Pab)

Catalog # AP59186

Product Information

Application	WB, IHC-P, IHC-F, IF, E
Primary Accession	Q8NG27
Reactivity	Rat, Pig, Dog
Host	Rabbit
Clonality	Polyclonal
Calculated MW	71002
Physical State	Liquid
Immunogen	KLH conjugated synthetic peptide derived from human RNF70
Epitope Specificity	541-640/643
Isotype	IgG
Purity	affinity purified by Protein A
Buffer	0.01M TBS (pH7.4) with 1% BSA, 0.02% Proclin300 and 50% Glycerol.
SIMILARITY	Contains 1 RING-type zinc finger.
SUBUNIT	Binds ubiquitin-conjugating enzymes (E2s). In vitro, interacts with the ubiquitin-conjugating enzyme, UBE2D2.
Post-translational modifications	Substrate for E2-dependent ubiquitination.
Important Note	This product as supplied is intended for research use only, not for use in human, therapeutic or diagnostic applications.
Background Descriptions	Has E2-dependent E3 ubiquitin-protein ligase activity. Ubiquitinates MAGED1 antigen leading to its subsequent degradation by proteasome (By similarity). May be involved in protein sorting.

Additional Information

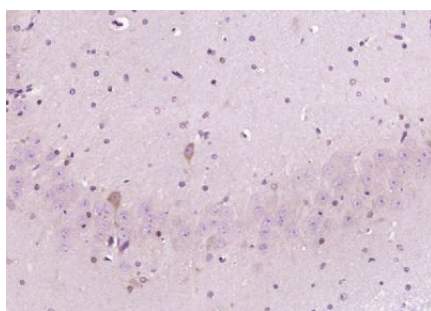
Gene ID	64219
Other Names	E3 ubiquitin-protein ligase Praja-1, Praja1, 2.3.2.27, RING finger protein 70, RING-type E3 ubiquitin transferase Praja-1, PJA1, RNF70
Target/Specificity	Expressed in various regions of the brain including the cerebellum, cerebral cortex, medulla, occipital pole, frontal lobe, temporal lobe and putamen. Highest levels in the cerebral cortex.
Dilution	WB=1:500-2000,IHC-P=1:100-500,IHC-F=1:100-500,IF=1:50-200,ELISA=1:5000-10000
Format	0.01M TBS(pH7.4) with 1% BSA, 0.09% (W/V) sodium azide and 50% Glyce
Storage	Store at -20 °C for one year. Avoid repeated freeze/thaw cycles. When reconstituted in sterile pH 7.4 0.01M PBS or diluent of antibody the antibody

is stable for at least two weeks at 2-4 °C.

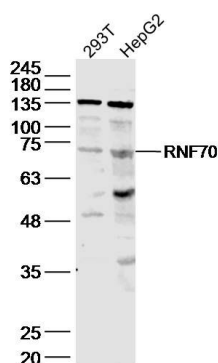
Protein Information

Name	PJA1
Synonyms	RNF70
Function	Has E2-dependent E3 ubiquitin-protein ligase activity. Ubiquitinates MAGED1 antigen leading to its subsequent degradation by proteasome (By similarity). May be involved in protein sorting.
Tissue Location	Expressed in various regions of the brain including the cerebellum, cerebral cortex, medulla, occipital pole, frontal lobe, temporal lobe and putamen. Highest levels in the cerebral cortex

Images



Paraformaldehyde-fixed, paraffin embedded (Rat brain); Antigen retrieval by boiling in sodium citrate buffer (pH6.0) for 15min; Block endogenous peroxidase by 3% hydrogen peroxide for 20 minutes; Blocking buffer (normal goat serum) at 37°C for 30min; Antibody incubation with (RNF70) Polyclonal Antibody, Unconjugated (AP59186) at 1:400 overnight at 4°C, followed by operating according to SP Kit(Rabbit) (sp-0023) instructions and DAB staining.



Sample:

293T(Human) Cell Lysate at 30 ug
HepG2(Human) Cell Lysate at 30 ug
Primary: Anti-RNF70 (AP59186) at 1/1000 dilution
Secondary: IRDye800CW Goat Anti-Rabbit IgG at 1/20000 dilution
Predicted band size: 71 kD
Observed band size: 71 kD

Please note: All products are 'FOR RESEARCH USE ONLY. NOT FOR USE IN DIAGNOSTIC OR THERAPEUTIC PROCEDURES'.