

CLTC Antibody (Center)

Affinity Purified Rabbit Polyclonal Antibody (Pab)

Catalog # AP5911c

Product Information

Application	IHC-P, FC, WB, E
Primary Accession	Q00610
Other Accession	P11442 , Q68FD5 , P49951 , NP_004850.1
Reactivity	Human
Predicted	Bovine, Mouse, Rat
Host	Rabbit
Clonality	Polyclonal
Isotype	Rabbit IgG
Clone Names	RB24434
Calculated MW	191615
Antigen Region	1019-1048

Additional Information

Gene ID	1213
Other Names	Clathrin heavy chain 1, Clathrin heavy chain on chromosome 17, CLH-17, CLTC, CLH17, CLTCL2, KIAA0034
Target/Specificity	This CLTC antibody is generated from rabbits immunized with a KLH conjugated synthetic peptide between 1019-1048 amino acids from the Central region of human CLTC.
Dilution	IHC-P~~1:100~500 FC~~1:10~50 WB~~1:1000 E~~Use at an assay dependent concentration.
Format	Purified polyclonal antibody supplied in PBS with 0.09% (W/V) sodium azide. This antibody is purified through a protein A column, followed by peptide affinity purification.
Storage	Maintain refrigerated at 2-8°C for up to 2 weeks. For long term storage store at -20°C in small aliquots to prevent freeze-thaw cycles.
Precautions	CLTC Antibody (Center) is for research use only and not for use in diagnostic or therapeutic procedures.

Protein Information

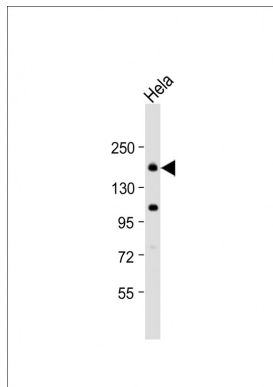
Name	CLH1
Function	Clathrin is the major protein of the polyhedral coat of coated pits and

vesicles. Two different adapter protein complexes link the clathrin lattice either to the plasma membrane or to the trans- Golgi network. Acts as a component of the TACC3/ch-TOG/clathrin complex proposed to contribute to stabilization of kinetochore fibers of the mitotic spindle by acting as inter-microtubule bridge (PubMed:[15858577](#), PubMed:[16968737](#), PubMed:[21297582](#)). The TACC3/ch-TOG/clathrin complex is required for the maintenance of kinetochore fiber tension (PubMed:[23532825](#)). Plays a role in early autophagosome formation (PubMed:[20639872](#)). Interaction with DNAJC6 mediates the recruitment of HSPA8 to the clathrin lattice and creates local destabilization of the lattice promoting uncoating (By similarity).

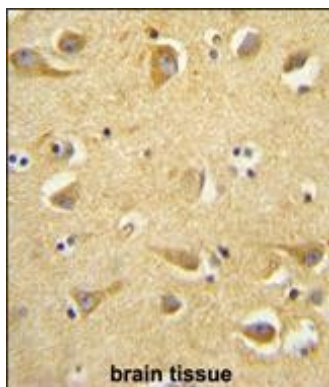
Cellular Location

Cytoplasmic vesicle membrane; Peripheral membrane protein; Cytoplasmic side. Membrane, coated pit; Peripheral membrane protein; Cytoplasmic side. Melanosome. Cytoplasm, cytoskeleton, spindle. Note=Cytoplasmic face of coated pits and vesicles. Identified by mass spectrometry in melanosome fractions from stage I to stage IV. In complex with TACC3 and CKAP5 (forming the TACC3/ch-TOG/clathrin complex) localized to inter-microtubule bridges in mitotic spindles.

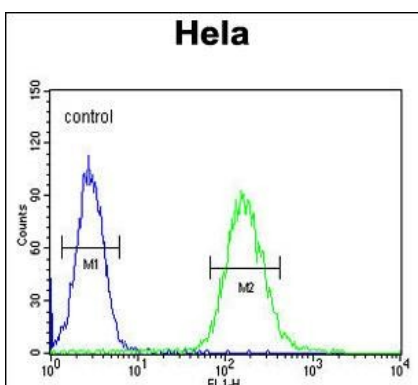
Images



Anti-CLTC Antibody (Center) at 1:1000 dilution + HeLa whole cell lysate Lysates/proteins at 20 µg per lane. Secondary Goat Anti-Rabbit IgG, (H+L), Peroxidase conjugated at 1/10000 dilution. Predicted band size : 192 kDa Blocking/Dilution buffer: 5% NFDM/TBST.



CLTC antibody (Center) (Cat. #AP5911c) immunohistochemistry analysis in formalin fixed and paraffin embedded human brain tissue followed by peroxidase conjugation of the secondary antibody and DAB staining. This data demonstrates the use of the CLTC antibody (Center) for immunohistochemistry. Clinical relevance has not been evaluated.



CLTC Antibody (Center) (Cat. #AP5911c) flow cytometric analysis of HeLa cells (right histogram) compared to a negative control cell (left histogram). FITC-conjugated goat-anti-rabbit secondary antibodies were used for the analysis.

Please note: All products are 'FOR RESEARCH USE ONLY. NOT FOR USE IN DIAGNOSTIC OR THERAPEUTIC PROCEDURES'.