

# BTBD6 Polyclonal Antibody

Purified Rabbit Polyclonal Antibody (Pab)

Catalog # AP58900

## Product Information

---

<b>Application</b>	WB, IHC-P, IHC-F, IF, E
<b>Primary Accession</b>	<a href="#">Q96KE9</a>
<b>Reactivity</b>	Rat, Bovine
<b>Host</b>	Rabbit
<b>Clonality</b>	Polyclonal
<b>Calculated MW</b>	58776
<b>Physical State</b>	Liquid
<b>Immunogen</b>	KLH conjugated synthetic peptide derived from human BTBD6
<b>Epitope Specificity</b>	131-240/485
<b>Isotype</b>	IgG
<b>Purity</b>	affinity purified by Protein A
<b>Buffer</b>	0.01M TBS (pH7.4) with 1% BSA, 0.02% Proclin300 and 50% Glycerol.
<b>SUBCELLULAR LOCATION</b>	Cytoplasm, P-body (By similarity).Note=Cytoplasmic bodies (By similarity)
<b>SIMILARITY</b>	Contains 1 BTB (POZ) domain.
<b>Important Note</b>	This product as supplied is intended for research use only, not for use in human, therapeutic or diagnostic applications.
<b>Background Descriptions</b>	The function of BTB/POZ domain containing protein 6 is not known. The BTB/POZ domain is an evolutionarily conserved protein-protein interaction domain often found in developmentally regulated transcription factors. Many additional conserved motifs have been found in association with BTB/POZ domain, including kelch repeats, zinc finger domains, FYVE fingers and ankyrin repeats. BTB/POZ domain containing protein 6 may be involved in neuronal development and muscle formation.

## Additional Information

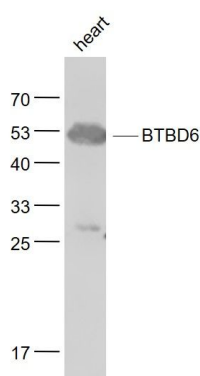
---

<b>Gene ID</b>	90135
<b>Other Names</b>	BTB/POZ domain-containing protein 6, Lens BTB domain protein, BTBD6, BDPL
<b>Target/Specificity</b>	Expressed in lens.
<b>Dilution</b>	WB=1:500-2000,IHC-P=1:100-500,IHC-F=1:100-500,IF=1:100-500,ELISA=1:5000-10000
<b>Format</b>	0.01M TBS(pH7.4) with 1% BSA, 0.09% (W/V) sodium azide and 50% Glyce
<b>Storage</b>	Store at -20 °C for one year. Avoid repeated freeze/thaw cycles. When reconstituted in sterile pH 7.4 0.01M PBS or diluent of antibody the antibody is stable for at least two weeks at 2-4 °C.

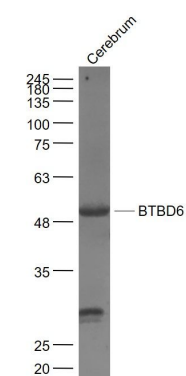
## Protein Information

Name	BTBD6 ( <a href="#">HGNC:19897</a> )
Synonyms	BDPL
Function	Adapter protein for the cul3 E3 ubiquitin-protein ligase complex (By similarity). Involved in late neuronal development and muscle formation (By similarity).
Cellular Location	Cytoplasm {ECO:0000250 UniProtKB:Q2LE78}. Note=Found in punctated bodies in the cytoplasm {ECO:0000250 UniProtKB:Q2LE78}
Tissue Location	Expressed in lens..

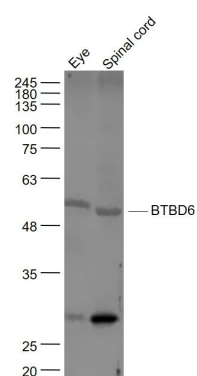
## Images



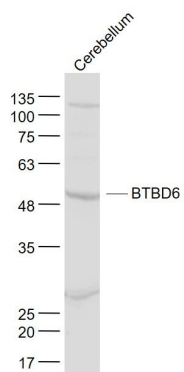
Sample:  
Heart (Mouse) Lysate at 40 ug  
Primary: Anti- BTBD6 (AP58900) at 1/1000 dilution  
Secondary: IRDye800CW Goat Anti-Rabbit IgG at 1/20000 dilution  
Predicted band size: 53 kD  
Observed band size: 53 kD



Sample:  
Cerebrum (Mouse) Lysate at 40 ug  
Primary: Anti- BTBD6 (AP58900) at 1/1000 dilution  
Secondary: IRDye800CW Goat Anti-Rabbit IgG at 1/20000 dilution  
Predicted band size: 53 kD  
Observed band size: 53 kD



Sample:  
Eye (Mouse) Lysate at 40 ug  
Spinal cord (Mouse) Lysate at 40 ug  
Primary: Anti- BTBD6 (AP58900) at 1/1000 dilution  
Secondary: IRDye800CW Goat Anti-Rabbit IgG at 1/20000 dilution  
Predicted band size: 53 kD  
Observed band size: 53 kD



**Sample:**

Cerebellum (Mouse) Lysate at 40 ug

Primary: Anti- BTBD6 (AP58900) at 1/1000 dilution

Secondary: IRDye800CW Goat Anti-Rabbit IgG at 1/20000 dilution

Predicted band size: 53 kD

Observed band size: 53 kD

Please note: All products are 'FOR RESEARCH USE ONLY. NOT FOR USE IN DIAGNOSTIC OR THERAPEUTIC PROCEDURES'.