

DCTN3 Rabbit pAb

DCTN3 Rabbit pAb
Catalog # AP58744

Product Information

Application	IHC-P, IHC-F, IF
Primary Accession	O75935
Reactivity	Mouse, Rat
Predicted	Human, Dog, Pig, Horse, Rabbit
Host	Rabbit
Clonality	Polyclonal
Calculated MW	21119
Physical State	Liquid
Immunogen	KLH conjugated synthetic peptide derived from human DCTN3
Epitope Specificity	41-150/186
Isotype	IgG
Purity	affinity purified by Protein A
Buffer	0.01M TBS (pH7.4) with 1% BSA, 0.02% Proclin300 and 50% Glycerol.
SUBCELLULAR LOCATION	Cytoplasm. Cytoplasm, cytoskeleton, centrosome. Chromosome, centromere, kinetochore. Cytoplasm, cytoskeleton, spindle. Cleavage furrow. Midbody. Note=Localizes to punctate cytoplasmic structures and to the centrosome during interphase, and to kinetochores and to spindle poles throughout mitosis. Colocalizes with dynein to the cleavage furrow and to midbody of dividing cells.
SIMILARITY	Belongs to the dynactin subunit 3 family.
SUBUNIT	Subunit of dynactin, a multiprotein complex associated with dynein.
Important Note	This product as supplied is intended for research use only, not for use in human, therapeutic or diagnostic applications.
Background Descriptions	Together with dynein may be involved in spindle assembly and cytokinesis. Tissue specificity:Ubiquitously expressed. Highly expressed in muscle and pancreas and detected at lower levels in brain.

Additional Information

Gene ID	11258
Other Names	Dynactin subunit 3, Dynactin complex subunit 22 kDa subunit, p22, DCTN3 {ECO:0000312 EMBL:CAG46687.1}, DCTN22
Target/Specificity	Ubiquitously expressed. Highly expressed in muscle and pancreas and detected at lower levels in brain.
Dilution	IHC-P=1:100-500,IHC-F=1:100-500,IF=1:100-500
Storage	Store at -20 °C for one year. Avoid repeated freeze/thaw cycles. When reconstituted in sterile pH 7.4 0.01M PBS or diluent of antibody the antibody

is stable for at least two weeks at 2-4 °C.

Protein Information

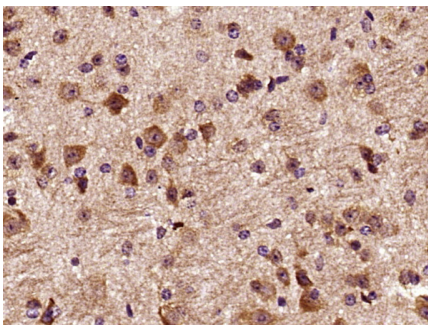
Name	DCTN3 {ECO:0000312 EMBL:CAG46687.1}
Synonyms	DCTN22
Function	Part of the dynactin complex that activates the molecular motor dynein for ultra-processive transport along microtubules (By similarity). Together with dynein may be involved in spindle assembly and cytokinesis (PubMed: 9722614).
Cellular Location	Cytoplasm. Cytoplasm, cytoskeleton, microtubule organizing center, centrosome. Chromosome, centromere, kinetochore. Cytoplasm, cytoskeleton, spindle. Cleavage furrow. Midbody Note=Localizes to punctate cytoplasmic structures and to the centrosome during interphase, and to kinetochores and to spindle poles throughout mitosis. Colocalizes with dynein to the cleavage furrow and to midbody of dividing cells
Tissue Location	Ubiquitously expressed. Highly expressed in muscle and pancreas and detected at lower levels in brain

Background

Together with dynein may be involved in spindle assembly and cytokinesis.

Tissue specificity:Ubiquitously expressed. Highly expressed in muscle and pancreas and detected at lower levels in brain.

Images



Paraformaldehyde-fixed, paraffin embedded (Mouse brain); Antigen retrieval by boiling in sodium citrate buffer (pH6.0) for 15min; Block endogenous peroxidase by 3% hydrogen peroxide for 20 minutes; Blocking buffer (normal goat serum) at 37°C for 30min; Antibody incubation with (DCTN3) Polyclonal Antibody, Unconjugated (AP58744) at 1:400 overnight at 4°C, followed by operating according to SP Kit(Rabbit) (sp-0023) instructions and DAB staining.

Please note: All products are 'FOR RESEARCH USE ONLY. NOT FOR USE IN DIAGNOSTIC OR THERAPEUTIC PROCEDURES'.