

ADSSL1 Antibody (N-term)

Affinity Purified Rabbit Polyclonal Antibody (Pab)

Catalog # AP5873a

Product Information

Application	WB, IHC-P, E
Primary Accession	Q8N142
Other Accession	A4Z6H0 , P28650 , A5PJR4 , NP_689541.1 , NP_954634.1
Reactivity	Human, Mouse
Predicted	Pig, Bovine
Host	Rabbit
Clonality	Polyclonal
Isotype	Rabbit IgG
Clone Names	RB22441
Calculated MW	50208
Antigen Region	96-123

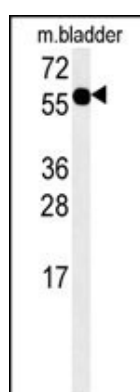
Additional Information

Gene ID	122622
Other Names	Adenylosuccinate synthetase isozyme 1 {ECO:0000255 HAMAP-Rule:MF_03126}, AMPSase 1 {ECO:0000255 HAMAP-Rule:MF_03126}, AdSS 1 {ECO:0000255 HAMAP-Rule:MF_03126}, 6344 {ECO:0000255 HAMAP-Rule:MF_03126}, Adenylosuccinate synthetase, basic isozyme {ECO:0000255 HAMAP-Rule:MF_03126}, Adenylosuccinate synthetase, muscle isozyme {ECO:0000255 HAMAP-Rule:MF_03126}, M-type adenylosuccinate synthetase {ECO:0000255 HAMAP-Rule:MF_03126}, IMP--aspartate ligase 1 {ECO:0000255 HAMAP-Rule:MF_03126}, ADSSL1 {ECO:0000255 HAMAP-Rule:MF_03126}
Target/Specificity	This ADSSL1 antibody is generated from rabbits immunized with a KLH conjugated synthetic peptide between 96-123 amino acids from the N-terminal region of human ADSSL1.
Dilution	WB~~1:1000 IHC-P~~1:100~500 E~~Use at an assay dependent concentration.
Format	Purified polyclonal antibody supplied in PBS with 0.09% (W/V) sodium azide. This antibody is purified through a protein A column, followed by peptide affinity purification.
Storage	Maintain refrigerated at 2-8°C for up to 2 weeks. For long term storage store at -20°C in small aliquots to prevent freeze-thaw cycles.
Precautions	ADSSL1 Antibody (N-term) is for research use only and not for use in diagnostic or therapeutic procedures.

Protein Information

Name	ADSSL1 (HGNC:20093)
Function	Component of the purine nucleotide cycle (PNC), which interconverts IMP and AMP to regulate the nucleotide levels in various tissues, and which contributes to glycolysis and ammoniagenesis. Catalyzes the first committed step in the biosynthesis of AMP from IMP.
Cellular Location	Cytoplasm {ECO:0000255 HAMAP-Rule:MF_03126, ECO:0000269 PubMed:15786719}
Tissue Location	Predominantly expressed in skeletal muscle and heart, as well as in several hematopoietic cell lines and solid tumors

Images



ADSSL1 Antibody (N-term) (Cat. #AP5873a) western blot analysis in mouse bladder tissue lysates (15ug/lane). This demonstrates the ADSSL1 antibody detected ADSSL1 protein (arrow).



ADSSL1 antibody (N-term) (Cat. #AP5873a) immunohistochemistry analysis in formalin fixed and paraffin embedded human skeletal muscle followed by peroxidase conjugation of the secondary antibody and DAB staining. This data demonstrates the use of the ADSSL1 antibody (N-term) for immunohistochemistry. Clinical relevance has not been evaluated.

Please note: All products are 'FOR RESEARCH USE ONLY. NOT FOR USE IN DIAGNOSTIC OR THERAPEUTIC PROCEDURES'.