

DEDD1 Polyclonal Antibody

Purified Rabbit Polyclonal Antibody (Pab)

Catalog # AP58583

Product Information

Application	WB, IHC-P, IHC-F, IF, E
Primary Accession	O75618
Reactivity	Rat, Pig, Bovine
Host	Rabbit
Clonality	Polyclonal
Calculated MW	36794
Physical State	Liquid
Immunogen	KLH conjugated synthetic peptide derived from human DEDD1
Epitope Specificity	151-250/318
Isotype	IgG
Purity	affinity purified by Protein A
Buffer	0.01M TBS (pH7.4) with 1% BSA, 0.02% Proclin300 and 50% Glycerol.
SUBCELLULAR LOCATION	Cytoplasm. Nucleus, nucleolus.
SIMILARITY	Contains 1 DED (death effector) domain.
SUBUNIT	Interacts with CASP8, CASP10, KRT8, KRT18, CASP3 and FADD. Homodimerizes and heterodimerizes with DEDD2.
Post-translational modifications	Exists predominantly in a mono- or diubiquitinated form.
Important Note	This product as supplied is intended for research use only, not for use in human, therapeutic or diagnostic applications.
Background Descriptions	This gene encodes a protein that contains a death effector domain (DED). DED is a protein-protein interaction domain shared by adaptors, regulators and executors of the programmed cell death pathway. Overexpression of this gene was shown to induce weak apoptosis. Upon stimulation, this protein was found to translocate from cytoplasm to nucleus and colocalize with UBTF, a basal factor required for RNA polymerase I transcription, in the nucleolus. At least three transcript variants encoding the same protein have been found for this gene.

Additional Information

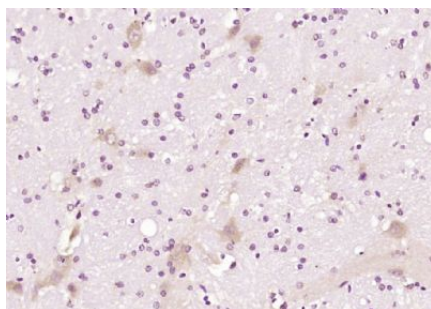
Gene ID	9191
Other Names	Death effector domain-containing protein, DEDPro1, Death effector domain-containing testicular molecule, FLDED-1, DEDD, DEDPRO1, DEFT
Target/Specificity	Widely expressed with highest levels in testis.
Dilution	WB=1:500-2000,IHC-P=1:100-500,IHC-F=1:100-500,IF=1:100-500,ELISA=1:5000-10000

Format	0.01M TBS(pH7.4) with 1% BSA, 0.09% (W/V) sodium azide and 50% Glyce
Storage	Store at -20 °C for one year. Avoid repeated freeze/thaw cycles. When reconstituted in sterile pH 7.4 0.01M PBS or diluent of antibody the antibody is stable for at least two weeks at 2-4 °C.

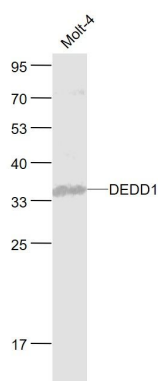
Protein Information

Name	DEDD
Synonyms	DEDPRO1, DEFT
Function	A scaffold protein that directs CASP3 to certain substrates and facilitates their ordered degradation during apoptosis. May also play a role in mediating CASP3 cleavage of KRT18. Regulates degradation of intermediate filaments during apoptosis. May play a role in the general transcription machinery in the nucleus and might be an important regulator of the activity of GTF3C3. Inhibits DNA transcription in vitro (By similarity).
Cellular Location	Cytoplasm. Nucleus, nucleolus. Note=Translocated to the nucleus during CD95-mediated apoptosis where it is localized in the nucleoli (By similarity). Following apoptosis induction, the mono and/or diubiquitination form increases and forms filamentous structures that colocalize with KRT8 and KRT18 intermediate filament network in simple epithelial cells.
Tissue Location	Widely expressed with highest levels in testis.

Images



Paraformaldehyde-fixed, paraffin embedded (rat brain); Antigen retrieval by boiling in sodium citrate buffer (pH6.0) for 15min; Block endogenous peroxidase by 3% hydrogen peroxide for 20 minutes; Blocking buffer (normal goat serum) at 37°C for 30min; Antibody incubation with (DEDD1) Polyclonal Antibody, Unconjugated (AP58583) at 1:200 overnight at 4°C, followed by operating according to SP Kit(Rabbit) (sp-0023) instructions and DAB staining.



Sample:
Molt-4(Human) Cell Lysate at 30 ug
Primary: Anti- DEDD1 (AP58583) at 1/1000 dilution
Secondary: IRDye800CW Goat Anti-Rabbit IgG at 1/20000 dilution
Predicted band size: 35 kD
Observed band size: 35 kD

Please note: All products are 'FOR RESEARCH USE ONLY. NOT FOR USE IN DIAGNOSTIC OR THERAPEUTIC PROCEDURES'.