

SCN8A/Nav1.6 Polyclonal Antibody

Purified Rabbit Polyclonal Antibody (Pab)

Catalog # AP58490

Product Information

Application	WB, IHC-P, IHC-F, IF, E
Primary Accession	Q9UQD0
Reactivity	Rat, Pig, Dog, Bovine
Host	Rabbit
Clonality	Polyclonal
Calculated MW	225280
Physical State	Liquid
Immunogen	KLH conjugated synthetic peptide derived from human SCN8A/Nav1.6
Epitope Specificity	251-314/314
Isotype	IgG
Purity	affinity purified by Protein A
Buffer	0.01M TBS (pH7.4) with 1% BSA, 0.02% Proclin300 and 50% Glycerol.
SUBCELLULAR LOCATION	Cytoplasm. Cytoplasm, perinuclear region.
SIMILARITY	Contains 1 CRAL-TRIO domain.
Important Note	This product as supplied is intended for research use only, not for use in human, therapeutic or diagnostic applications.
Background Descriptions	Mediates the voltage-dependent sodium ion permeability of excitable membranes. Assuming opened or closed conformations in response to the voltage difference across the membrane, the protein forms a sodium-selective channel through which Na(+) ions may pass in accordance with their electrochemical gradient. In macrophages and melanoma cells, isoform 5 may participate in the control of podosome and invadopodia formation.

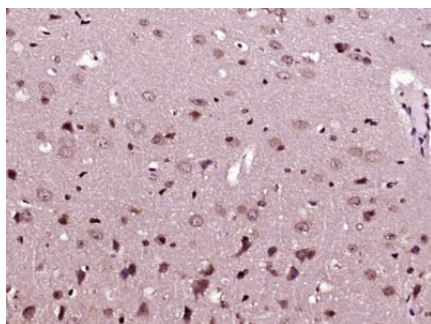
Additional Information

Gene ID	6334
Other Names	Sodium channel protein type 8 subunit alpha, Sodium channel protein type VIII subunit alpha, Voltage-gated sodium channel subunit alpha Nav1.6, SCN8A, MED
Dilution	WB=1:500-2000,IHC-P=1:100-500,IHC-F=1:100-500,IF=1:100-500,ELISA=1:5000-10000
Format	0.01M TBS(pH7.4) with 1% BSA, 0.09% (W/V) sodium azide and 50% Glyce
Storage	Store at -20 °C for one year. Avoid repeated freeze/thaw cycles. When reconstituted in sterile pH 7.4 0.01M PBS or diluent of antibody the antibody is stable for at least two weeks at 2-4 °C.

Protein Information

Name	SCN8A (HGNC:10596)
Synonyms	MED
Function	Pore-forming subunit of a voltage-gated sodium channel complex assuming opened or closed conformations in response to the voltage difference across membranes and through which sodium ions selectively pass along their electrochemical gradient (PubMed: 24874546 , PubMed: 25239001 , PubMed: 25725044 , PubMed: 26900580 , PubMed: 29726066 , PubMed: 33245860 , PubMed: 36696443 , PubMed: 36823201). Contributes to neuronal excitability by regulating action potential threshold and propagation (PubMed: 24874546 , PubMed: 25239001 , PubMed: 25725044 , PubMed: 26900580 , PubMed: 29726066 , PubMed: 33245860 , PubMed: 36696443 , PubMed: 36823201).
Cellular Location	Cell membrane; Multi-pass membrane protein. Cell projection, axon {ECO:0000250 UniProtKB:Q9WTU3}. Note=Mainly localizes to the axon initial segment. {ECO:0000250 UniProtKB:Q9WTU3}
Tissue Location	Expressed in the hippocampus with increased expression in epileptic tissue compared to normal adjacent tissue (at protein level) (PubMed:28842554).

Images



Paraformaldehyde-fixed, paraffin embedded (Mouse brain); Antigen retrieval by boiling in sodium citrate buffer (pH6.0) for 15min; Block endogenous peroxidase by 3% hydrogen peroxide for 20 minutes; Blocking buffer (normal goat serum) at 37°C for 30min; Antibody incubation with (SCN8A/Nav1.6) Polyclonal Antibody, Unconjugated (AP58490) at 1:400 overnight at 4°C, followed by operating according to SP Kit(Rabbit) (sp-0023) instructions and DAB staining.

Please note: All products are 'FOR RESEARCH USE ONLY. NOT FOR USE IN DIAGNOSTIC OR THERAPEUTIC PROCEDURES'.