

Phospholipase C beta 2 Rabbit pAb

Phospholipase C beta 2 Rabbit pAb

Catalog # AP58450

Product Information

Application	WB, IHC-P, IHC-F, IF
Primary Accession	Q00722
Reactivity	Human, Mouse
Predicted	Rat, Dog, Pig, Horse, Rabbit
Host	Rabbit
Clonality	Polyclonal
Calculated MW	134024
Physical State	Liquid
Immunogen	KLH conjugated synthetic peptide derived from human Phospholipase C beta 2
Epitope Specificity	401-500/1185
Isotype	IgG
Purity	affinity purified by Protein A
Buffer	0.01M TBS (pH7.4) with 1% BSA, 0.02% Proclin300 and 50% Glycerol.
SIMILARITY	Contains 1 C2 domain.Contains 1 PI-PLC X-box domain.Contains 1 PI-PLC Y-box domain.
SUBUNIT	Interacts with RAC1.
Important Note	This product as supplied is intended for research use only, not for use in human, therapeutic or diagnostic applications.
Background Descriptions	The production of the second messenger molecules diacylglycerol (DAG) and inositol 1,4,5-trisphosphate (IP3) is mediated by activated phosphatidylinositol-specific phospholipase C enzymes.

Additional Information

Gene ID	5330
Other Names	1-phosphatidylinositol 4, 5-bisphosphate phosphodiesterase beta-2, 3.1.4.11, Phosphoinositide phospholipase C-beta-2, Phospholipase C-beta-2, PLC-beta-2, PLCB2 (HGNC:9055)
Dilution	WB=1:500-2000,IHC-P=1:100-500,IHC-F=1:100-500,IF=1:100-500,Flow-Cyt=1 µg/Test
Storage	Store at -20 °C for one year. Avoid repeated freeze/thaw cycles. When reconstituted in sterile pH 7.4 0.01M PBS or diluent of antibody the antibody is stable for at least two weeks at 2-4 °C.

Protein Information

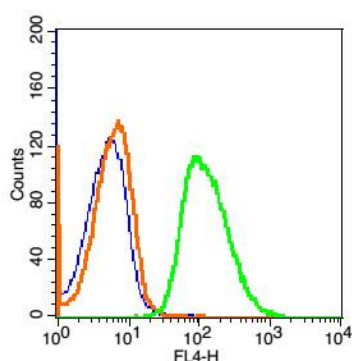
Name PLCB2 ([HGNC:9055](#))

Function The production of the second messenger molecules diacylglycerol (DAG) and inositol 1,4,5-trisphosphate (IP3) is mediated by activated phosphatidylinositol-specific phospholipase C enzymes (PubMed:[1644792](#), PubMed:[9188725](#)). In neutrophils, participates in a phospholipase C-activating N-formyl peptide-activated GPCR (G protein- coupled receptor) signaling pathway by promoting RASGRP4 activation by DAG, to promote neutrophil functional responses (By similarity).

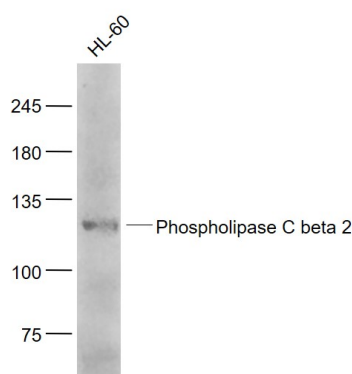
Background

The production of the second messenger molecules diacylglycerol (DAG) and inositol 1,4,5-trisphosphate (IP3) is mediated by activated phosphatidylinositol-specific phospholipase C enzymes.

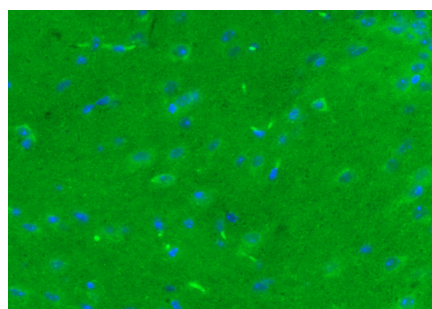
Images



Blank control: Hela Cells(fixed with 2% paraformaldehyde (10 min) and then permeabilized with ice-cold 90% methanol for 30 min on ice). Primary Antibody: Rabbit Anti-Phospholipase C beta 2/AF647 Conjugated antibody (AP58450-AF647), Dilution: 1 µg in 100 µL 1X PBS containing 0.5% BSA; Isotype Control Antibody: Rabbit IgG/AF647(orange) ,used under the same conditions.

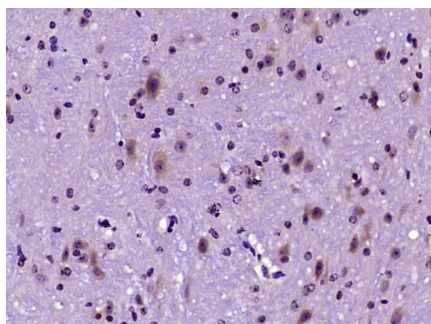


Sample:
HL-60(Human) Cell Lysate at 30 ug
Primary: Anti- Phospholipase C beta 2 (AP58450) at 1/1000 dilution
Secondary: IRDye800CW Goat Anti-Rabbit IgG at 1/20000 dilution
Predicted band size: 130 kD
Observed band size: 130 kD

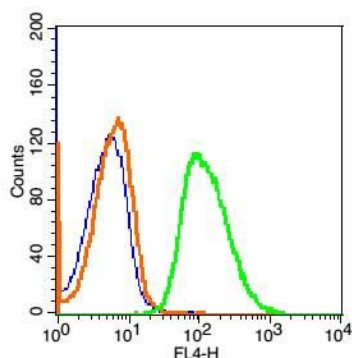


Paraformaldehyde-fixed, paraffin embedded (Mouse brain); Antigen retrieval by boiling in sodium citrate buffer (pH6.0) for 15min; Block endogenous peroxidase by 3% hydrogen peroxide for 20 minutes; Blocking buffer (normal goat serum) at 37°C for 30min; Antibody incubation with (Phospholipase C beta 2) Polyclonal Antibody, Unconjugated (AP58450) at 1:400 overnight at 4°C, followed by a conjugated Goat Anti-Rabbit IgG antibody (AP58450-FITC) for 90 minutes, and DAPI for nuclei staining.

Paraformaldehyde-fixed, paraffin embedded (mouse brain tissue); Antigen retrieval by boiling in sodium citrate buffer (pH6.0) for 15min; Block endogenous peroxidase



by 3% hydrogen peroxide for 20 minutes; Blocking buffer (normal goat serum) at 37°C for 30min; Antibody incubation with (PLCB2) Polyclonal Antibody, Unconjugated (AP58450) at 1:400 overnight at 4°C, followed by operating according to SP Kit(Rabbit) (sp-0023) instructions and DAB staining.



Blank control: Hela Cells(fixed with 2% paraformaldehyde (10 min) and then permeabilized with ice-cold 90% methanol for 30 min on ice).

Primary Antibody: Rabbit Anti-Phospholipase C beta 2/AF647 Conjugated antibody (AP58450-AF647), Dilution: 1 µg in 100 µL 1X PBS containing 0.5% BSA;

Isotype Control Antibody: Rabbit IgG/AF647(orange), used under the same conditions.

Please note: All products are 'FOR RESEARCH USE ONLY. NOT FOR USE IN DIAGNOSTIC OR THERAPEUTIC PROCEDURES'.