

GCMA Polyclonal Antibody

Purified Rabbit Polyclonal Antibody (Pab)

Catalog # AP58416

Product Information

Application	WB, IHC-P, IHC-F, IF, E
Primary Accession	Q9NP62
Reactivity	Rat, Pig, Dog, Bovine
Host	Rabbit
Clonality	Polyclonal
Calculated MW	49268
Physical State	Liquid
Immunogen	KLH conjugated synthetic peptide derived from human GCMA/GCM1
Epitope Specificity	121-220/436
Isotype	IgG
Purity	affinity purified by Protein A
Buffer	0.01M TBS (pH7.4) with 1% BSA, 0.02% Proclin300 and 50% Glycerol.
SUBCELLULAR LOCATION	Nucleus.
SIMILARITY	Contains 1 GCM DNA-binding domain.
Important Note	This product as supplied is intended for research use only, not for use in human, therapeutic or diagnostic applications.
Background Descriptions	This gene encodes a DNA-binding protein with a gcm-motif (glial cell missing motif). The encoded protein is a homolog of the Drosophila glial cells missing gene (gcm). This protein binds to the GCM-motif (A/G)CCCGCAT, a novel sequence among known targets of DNA-binding proteins. The N-terminal DNA-binding domain confers the unique DNA-binding activity of this protein. [provided by RefSeq, Jul 2008].

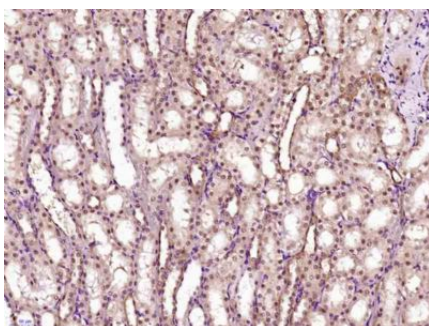
Additional Information

Gene ID	8521
Other Names	Chorion-specific transcription factor GCMA, hGCMA, GCM motif protein 1, Glial cells missing homolog 1, GCM1, GCMA
Target/Specificity	Placenta specific.
Dilution	WB=1:500-2000,IHC-P=1:100-500,IHC-F=1:100-500,IF=1:100-500,ELISA=1:5000-10000
Format	0.01M TBS(pH7.4) with 1% BSA, 0.09% (W/V) sodium azide and 50% Glyce
Storage	Store at -20 °C for one year. Avoid repeated freeze/thaw cycles. When reconstituted in sterile pH 7.4 0.01M PBS or diluent of antibody the antibody is stable for at least two weeks at 2-4 °C.

Protein Information

Name	GCM1
Synonyms	GCMA
Function	Transcription factor involved in the control of expression of placental growth factor (PGF) and other placenta-specific genes (PubMed: 10542267 , PubMed: 18160678). Binds to the trophoblast-specific element 2 (TSE2) of the aromatase gene enhancer (PubMed: 10542267). Binds to the SYDE1 promoter (PubMed: 27917469). Has a central role in mediating the differentiation of trophoblast cells along both the villous and extravillous pathways in placental development (PubMed: 19219068).
Cellular Location	Nucleus {ECO:0000255 PROSITE-ProRule:PRU00245}.
Tissue Location	Highly expressed in the placenta (PubMed:10542267). Expressed in trophoblast cells of the villi (PubMed:27917469)

Images



Paraformaldehyde-fixed, paraffin embedded (Rat kidney); Antigen retrieval by boiling in sodium citrate buffer (pH6.0) for 15min; Block endogenous peroxidase by 3% hydrogen peroxide for 20 minutes; Blocking buffer (normal goat serum) at 37°C for 30min; Antibody incubation with (GCMA) Polyclonal Antibody, Unconjugated (AP58416) at 1:400 overnight at 4°C, followed by operating according to SP Kit(Rabbit) (sp-0023) instructions and DAB staining.

Please note: All products are 'FOR RESEARCH USE ONLY. NOT FOR USE IN DIAGNOSTIC OR THERAPEUTIC PROCEDURES'.