

SLC44A1 Rabbit pAb

SLC44A1 Rabbit pAb
Catalog # AP58088

Product Information

Application	IHC-P, IHC-F, IF
Primary Accession	Q8WWI5
Reactivity	Human, Rat
Predicted	Mouse, Dog, Pig, Horse, Sheep
Host	Rabbit
Clonality	Polyclonal
Calculated MW	73302
Physical State	Liquid
Immunogen	KLH conjugated synthetic peptide derived from human SLC44A1/CD92
Epitope Specificity	81-180/657
Isotype	IgG
Purity	affinity purified by Protein A
Buffer	0.01M TBS (pH7.4) with 1% BSA, 0.02% Proclin300 and 50% Glycerol.
SUBCELLULAR LOCATION	Cell membrane; Multi-pass membrane protein. Mitochondrion outer membrane; Multi-pass membrane protein.
SIMILARITY	Belongs to the CTL (choline transporter-like) family.
Important Note	This product as supplied is intended for research use only, not for use in human, therapeutic or diagnostic applications.
Background Descriptions	SLC44A1 (Solute carrier family 44, member 1) is an intermediate-affinity, Na ⁺ -independent choline transporter. It is thought to be important for the production of the membrane lipid phosphatidylcholine. Hence, it may have a role in membrane synthesis and myelin production.

Additional Information

Gene ID	23446
Other Names	Choline transporter-like protein 1, CDw92, Solute carrier family 44 member 1, CD92, SLC44A1 (HGNC:18798), CD92, CDW92, CTL1
Target/Specificity	Expressed in various cells of the hematopoietic system.
Dilution	IHC-P=1:100-500,IHC-F=1:100-500,IF=1:100-500
Storage	Store at -20 °C for one year. Avoid repeated freeze/thaw cycles. When reconstituted in sterile pH 7.4 0.01M PBS or diluent of antibody the antibody is stable for at least two weeks at 2-4 °C.

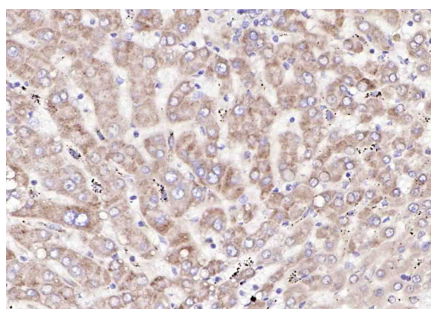
Protein Information

Name	SLC44A1 (HGNC:18798)
Synonyms	CD92, CDW92, CTL1
Function	Choline/H ⁺ antiporter (PubMed: 19357133 , PubMed: 23651124 , PubMed: 31855247 , PubMed: 33789160). Also acts as a high-affinity ethanolamine/H ⁺ antiporter, regulating the supply of extracellular ethanolamine (Etn) for the CDP-Etn pathway, redistribute intracellular Etn and balance the CDP-Cho and CDP-Etn arms of the Kennedy pathway (PubMed: 33789160). Involved in membrane synthesis and myelin production (PubMed: 31855247).
Cellular Location	Cell membrane; Multi-pass membrane protein. Mitochondrion outer membrane; Multi-pass membrane protein
Tissue Location	Expressed in various cells of the hematopoietic system.

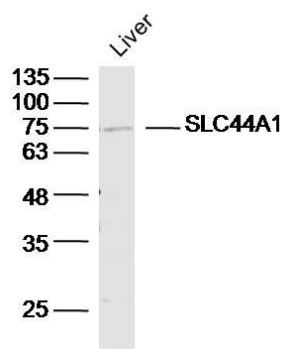
Background

SLC44A1 (Solute carrier family 44, member 1) is an intermediate-affinity, Na⁺-independent choline transporter. It is thought to be important for the production of the membrane lipid phosphatidylcholine. Hence, it may have a role in membrane synthesis and myelin production.

Images

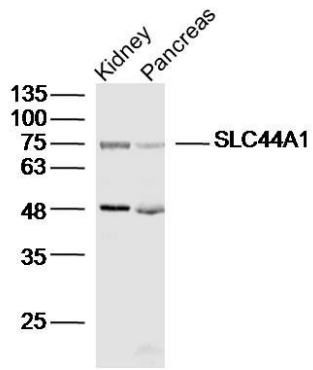


Paraformaldehyde-fixed, paraffin embedded Human Liver; Antigen retrieval by boiling in sodium citrate buffer (pH6.0) for 15 min; Antibody incubation with SLC44A1 Polyclonal Antibody, Unconjugated (AP58088) at 1:100 overnight at 4°C, followed by conjugation to the AP58088-HRP and DAB (C-0010) staining.



Sample:Liver (Mouse) Lysate at 40 ug
 Primary: Anti-SLC44A1(AP58088)at 1/300 dilution
 Secondary: IRDye800CW Goat Anti-Rabbit IgG at 1/20000 dilution
 Predicted band size: 73kD
 Observed band size: 75kD

Sample:
 Kindey (Mouse) Lysate at 40 ug
 Pancreas (Mouse) Lysate at 40 ug
 Primary: Anti-SLC44A1(AP58088)at 1/300 dilution
 Secondary: IRDye800CW Goat Anti-Rabbit IgG at 1/20000 dilution
 Predicted band size: 73kD
 Observed band size: 75kD



Please note: All products are 'FOR RESEARCH USE ONLY. NOT FOR USE IN DIAGNOSTIC OR THERAPEUTIC PROCEDURES'.