

BDKRB2 Rabbit pAb

BDKRB2 Rabbit pAb

Catalog # AP58023

Product Information

Application	IHC-P, IHC-F, IF
Primary Accession	P30411
Reactivity	Rat
Predicted	Human, Mouse
Host	Rabbit
Clonality	Polyclonal
Calculated MW	44461
Physical State	Liquid
Immunogen	KLH conjugated synthetic peptide derived from human Bdkrb2
Epitope Specificity	51-150/391
Isotype	IgG
Purity	affinity purified by Protein A
Buffer	0.01M TBS (pH7.4) with 1% BSA, 0.02% Proclin300 and 50% Glycerol.
SUBCELLULAR LOCATION	Cell membrane; Multi-pass membrane protein.
SIMILARITY	Belongs to the G-protein coupled receptor 1 family. Bradykinin receptor subfamily. BDKRB2 sub-subfamily.
SUBUNIT	Forms a complex with PECAM1 and GNAQ. Interacts with PECAM1.
Important Note	This product as supplied is intended for research use only, not for use in human, therapeutic or diagnostic applications.
Background Descriptions	Bradykinin increases vascular permeability, dilates blood vessels, contracts non-vascular smooth muscle, and causes pain. This product detects a receptor for bradykinin. The receptor is associated with G proteins that activate a phosphatidylinositol-calcium second messenger system. Bradykinin B2 receptor expression has been reported in blood, brain, eye, kidney, liver, lung, prostate, skin, small intestine, synovium, uterus, and vessel. ESTs have been isolated from colon, connective tissue, heart, heart/melanocyte/uterus, kidney, lung, placenta, and thyroid libraries.

Additional Information

Gene ID	624
Other Names	B2 bradykinin receptor, B2R, BK-2 receptor, BDKRB2, BKR2
Target/Specificity	Ubiquitous. Widespread in normal smooth muscle tissue and neurons.
Dilution	IHC-P=1:100-500,IHC-F=1:100-500,IF=1:100-500
Storage	Store at -20 °C for one year. Avoid repeated freeze/thaw cycles. When reconstituted in sterile pH 7.4 0.01M PBS or diluent of antibody the antibody is stable for at least two weeks at 2-4 °C.

Protein Information

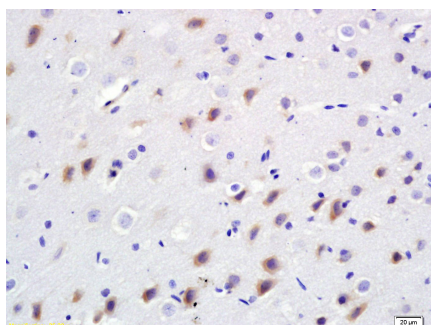
Name	BDKRB2
Synonyms	BKR2
Function	Receptor for bradykinin. It is associated with G proteins that activate a phosphatidylinositol-calcium second messenger system.
Cellular Location	Cell membrane; Multi-pass membrane protein
Tissue Location	Ubiquitous. Widespread in normal smooth muscle tissue and neurons.

Background

Bradykinin increases vascular permeability, dilates blood vessels, contracts non-vascular smooth muscle, and causes pain. This product detects a receptor for bradykinin. The receptor is associated with G proteins that activate a phosphatidylinositol-calcium second messenger system.

Bradykinin B2 receptor expression has been reported in blood, brain, eye, kidney, liver, lung, prostate, skin, small intestine, synovium, uterus, and vessel. ESTs have been isolated from colon, connective tissue, heart, heart/melanocyte/uterus, kidney, lung, placenta, and thyroid libraries.

Images



Tissue/cell: rat brain tissue; 4% Paraformaldehyde-fixed and paraffin-embedded;
Antigen retrieval: citrate buffer (0.01M, pH 6.0), Boiling bathing for 15min; Block endogenous peroxidase by 3% Hydrogen peroxide for 30min; Blocking buffer (normal goat serum,C-0005) at 37°C for 20 min;
Incubation: Anti-Bdkrb2/B2R Polyclonal Antibody, Unconjugated(AP58023) 1:200, overnight at 4°C, followed by conjugation to the secondary antibody(SP-0023) and DAB(C-0010) staining

Please note: All products are 'FOR RESEARCH USE ONLY. NOT FOR USE IN DIAGNOSTIC OR THERAPEUTIC PROCEDURES'.