

# KLHL6 Antibody (C-term)

Affinity Purified Rabbit Polyclonal Antibody (Pab)

Catalog # AP5793b

## Product Information

---

<b>Application</b>	WB, IHC-P, FC, E
<b>Primary Accession</b>	<a href="#">Q8WZ60</a>
<b>Other Accession</b>	<a href="#">NP_569713.2</a>
<b>Reactivity</b>	Human, Mouse
<b>Host</b>	Rabbit
<b>Clonality</b>	Polyclonal
<b>Isotype</b>	Rabbit IgG
<b>Clone Names</b>	RB27338
<b>Calculated MW</b>	70359
<b>Antigen Region</b>	543-571

## Additional Information

---

<b>Gene ID</b>	89857
<b>Other Names</b>	Kelch-like protein 6, KLHL6
<b>Target/Specificity</b>	This KLHL6 antibody is generated from rabbits immunized with a KLH conjugated synthetic peptide between 543-571 amino acids from the C-terminal region of human KLHL6.
<b>Dilution</b>	WB~~1:1000 IHC-P~~1:100~500 FC~~1:10~50 E~~Use at an assay dependent concentration.
<b>Format</b>	Purified polyclonal antibody supplied in PBS with 0.09% (W/V) sodium azide. This antibody is purified through a protein A column, followed by peptide affinity purification.
<b>Storage</b>	Maintain refrigerated at 2-8°C for up to 2 weeks. For long term storage store at -20°C in small aliquots to prevent freeze-thaw cycles.
<b>Precautions</b>	KLHL6 Antibody (C-term) is for research use only and not for use in diagnostic or therapeutic procedures.

## Protein Information

---

<b>Name</b>	KLHL6
<b>Function</b>	Involved in B-lymphocyte antigen receptor signaling and germinal center formation.

## Tissue Location

Found in germinal center B-cells.

## Background

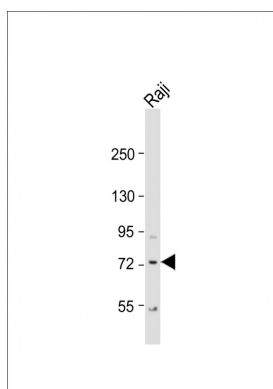
Involved in B-lymphocyte antigen receptor signaling and germinal center formation

## References

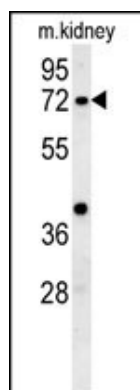
Gupta-Rossi, N., et al. Mol. Immunol. 39(13):791-799(2003)

Hattori, A., et al. DNA Res. 7(6):357-366(2000)

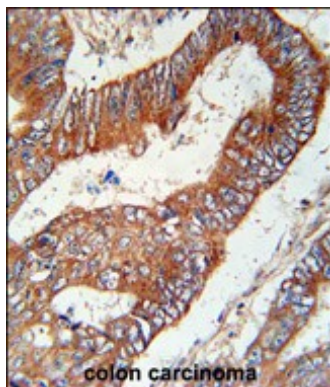
## Images



Anti-KLHL6 Antibody (C-term) at 1:1000 dilution + Raji whole cell lysate Lysates/proteins at 20 µg per lane. Secondary Goat Anti-Rabbit IgG, (H+L), Peroxidase conjugated at 1/10000 dilution. Predicted band size : 70 kDa Blocking/Dilution buffer: 5% NFDM/TBST.

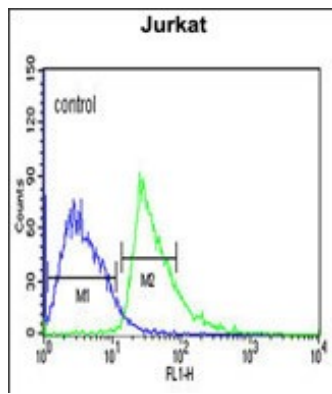


KLHL6 Antibody (C-term) (Cat. #AP5793b) western blot analysis in mouse kidney tissue lysates (15ug/lane). This demonstrates the KLHL6 antibody detected KLHL6 protein (arrow).



KLHL6 Antibody (C-term) (Cat. #AP5793b) immunohistochemistry analysis in formalin fixed and paraffin embedded human colon carcinoma followed by peroxidase conjugation of the secondary antibody and DAB staining. This data demonstrates the use of the KLHL6 Antibody (C-term) for immunohistochemistry. Clinical relevance has not been evaluated.

KLHL6 Antibody (C-term) (Cat. #AP5793b) flow cytometric analysis of Jurkat cells (right histogram) compared to a negative control cell (left histogram). FITC-conjugated goat-anti-rabbit secondary antibodies were used for the analysis.



Please note: All products are 'FOR RESEARCH USE ONLY. NOT FOR USE IN DIAGNOSTIC OR THERAPEUTIC PROCEDURES'.