

FOXC2 Antibody (Center S174)

Affinity Purified Rabbit Polyclonal Antibody (Pab)

Catalog # AP5750c

Product Information

Application	WB, IHC-P, FC, E
Primary Accession	Q99958
Other Accession	NP_005242
Reactivity	Human
Host	Rabbit
Clonality	Polyclonal
Isotype	Rabbit IgG
Clone Names	RB20052
Calculated MW	53719
Antigen Region	159-186

Additional Information

Gene ID	2303
Other Names	Forkhead box protein C2, Forkhead-related protein FKHL14, Mesenchyme fork head protein 1, MFH-1 protein, Transcription factor FKH-14, FOXC2, FKHL14, MFH1
Target/Specificity	This FOXC2 antibody is generated from rabbits immunized with a KLH conjugated synthetic peptide between 159-186 amino acids from the Central region of human FOXC2.
Dilution	WB~~1:1000 IHC-P~~1:100~500 FC~~1:10~50 E~~Use at an assay dependent concentration.
Format	Purified polyclonal antibody supplied in PBS with 0.09% (W/V) sodium azide. This antibody is purified through a protein A column, followed by peptide affinity purification.
Storage	Maintain refrigerated at 2-8°C for up to 2 weeks. For long term storage store at -20°C in small aliquots to prevent freeze-thaw cycles.
Precautions	FOXC2 Antibody (Center S174) is for research use only and not for use in diagnostic or therapeutic procedures.

Protein Information

Name	FOXC2
Synonyms	FKHL14, MFH1

Function	Transcriptional activator.
Cellular Location	Nucleus {ECO:0000255 PROSITE-ProRule:PRU00089, ECO:0000269 PubMed:23878394, ECO:0000269 PubMed:28179430}

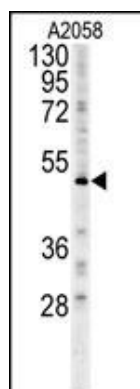
Background

FOXC2 belongs to the forkhead family of transcription factors which is characterized by a distinct DNA-binding forkhead domain. The specific function of this gene has not yet been determined; however, it may play a role in the development of mesenchymal tissues.

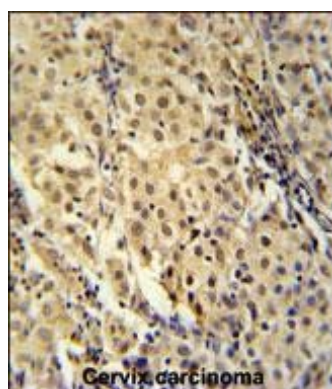
References

van Dongen, M.J., et al. J. Mol. Biol. 296(2):351-359(2000)
Mangion, J., et al. Am. J. Hum. Genet. 65(2):427-432(1999)
Miura, N., et al. Genomics 41(3):489-492(1997)
Kaestner, K.H., et al. Development 122(6):1751-1758(1996)

Images

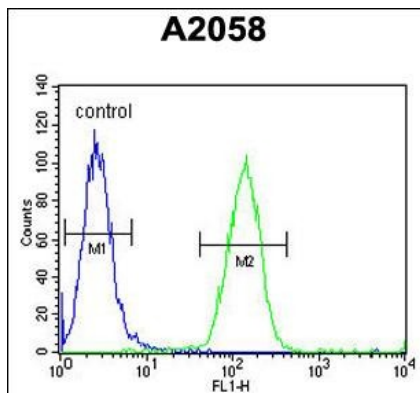


FOXC2 Antibody (Center S174) (Cat. #AP5750c) western blot analysis in A2058 cell line lysates (15ug/lane). This demonstrates the FOXC2 antibody detected the FOXC2 protein (arrow).



FOXC2 Antibody (Center S174) (Cat. #AP5750c) immunohistochemistry analysis in formalin fixed and paraffin embedded human cervix carcinoma followed by peroxidase conjugation of the secondary antibody and DAB staining. This data demonstrates the use of the FOXC2 Antibody (Center S174) for immunohistochemistry. Clinical relevance has not been evaluated.

FOXC2 Antibody (Center S174) (Cat. #AP5750c) flow cytometric analysis of A2058 cells (right histogram) compared to a negative control cell (left histogram). FITC-conjugated goat-anti-rabbit secondary antibodies were used for the analysis.



Please note: All products are 'FOR RESEARCH USE ONLY. NOT FOR USE IN DIAGNOSTIC OR THERAPEUTIC PROCEDURES'.