

Myeloid Marker Polyclonal Antibody

Purified Rabbit Polyclonal Antibody (Pab)

Catalog # AP57410

Product Information

Application	WB, IHC-P, IHC-F, IF, ICC, E
Primary Accession	Q96S97
Reactivity	Pig
Host	Rabbit
Clonality	Polyclonal
Calculated MW	35274
Physical State	Liquid
Immunogen	KLH conjugated synthetic peptide derived from human Myeloid Marker
Epitope Specificity	51-150/322
Isotype	IgG
Purity	affinity purified by Protein A
Buffer	0.01M TBS (pH7.4) with 1% BSA, 0.02% Proclin300 and 50% Glycerol.
SUBCELLULAR LOCATION	Membrane.
SIMILARITY	Belongs to the MAL family. Contains 2 MARVEL domains.
Important Note	This product as supplied is intended for research use only, not for use in human, therapeutic or diagnostic applications.
Background Descriptions	Myeloid cells originate in the bone marrow during hematopoiesis and encompass all hemopoietic cells except the lymphoid cells (T cells, B cells, NK cells and dendritic cells). Vascular endothelial cells can differentiate from common myeloid progenitors, and these cells that form the bone marrow-derived myeloid lineage express markers such as CD31, von Willebrand factor and Tie2. Other myeloid markers may be used to track certain diseases, such as Kawasaki disease, a self-limited vasculitis that affects many organs, including the skin and mucous membranes, lymph nodes, blood vessel walls and heart.

Additional Information

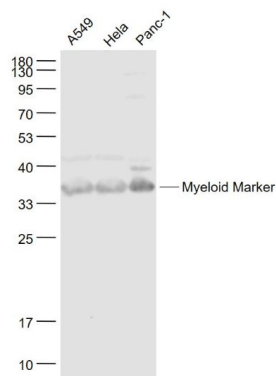
Gene ID	91663
Other Names	Myeloid-associated differentiation marker, Protein SB135, MYADM
Target/Specificity	Widely expressed. Not detected in thymus.
Dilution	WB=1:500-2000,IHC-P=1:100-500,IHC-F=1:100-500,ICC=1:100-500,IF=1:100-500,ELISA=1:5000-10000
Format	0.01M TBS(pH7.4) with 1% BSA, 0.09% (W/V) sodium azide and 50% Glyce
Storage	Store at -20 °C for one year. Avoid repeated freeze/thaw cycles. When reconstituted in sterile pH 7.4 0.01M PBS or diluent of antibody the antibody

is stable for at least two weeks at 2-4 °C.

Protein Information

Name	MYADM
Cellular Location	Membrane; Multi-pass membrane protein
Tissue Location	Widely expressed. Not detected in thymus.

Images



Sample:

A549(Human) Cell Lysate at 30 ug

HeLa(Human) Cell Lysate at 30 ug

Panc-1(Human) Cell Lysate at 30 ug

Primary: Anti- Myeloid Marker (AP57410) at 1/300 dilution

Secondary: IRDye800CW Goat Anti-Rabbit IgG at 1/20000 dilution

Predicted band size: 36 kD

Observed band size: 36 kD

Please note: All products are 'FOR RESEARCH USE ONLY. NOT FOR USE IN DIAGNOSTIC OR THERAPEUTIC PROCEDURES'.