

LPLUNC3 Polyclonal Antibody

Purified Rabbit Polyclonal Antibody (Pab)

Catalog # AP57055

Product Information

Application	WB, IHC-P, IHC-F, IF, ICC, E
Primary Accession	P59826
Reactivity	Rat
Host	Rabbit
Clonality	Polyclonal
Calculated MW	49887
Physical State	Liquid
Immunogen	KLH conjugated synthetic peptide derived from human LPLUNC3
Epitope Specificity	21-120/476
Isotype	IgG
Purity	affinity purified by Protein A
Buffer	0.01M TBS (pH7.4) with 1% BSA, 0.02% Proclin300 and 50% Glycerol.
SUBCELLULAR LOCATION	Secreted. Cytoplasm. Note=According to PubMed:12837268, it is cytoplasmic.
SIMILARITY	Belongs to the BPI/LBP/Plunc superfamily. BPI/LBP family.
Important Note	This product as supplied is intended for research use only, not for use in human, therapeutic or diagnostic applications.

Additional Information

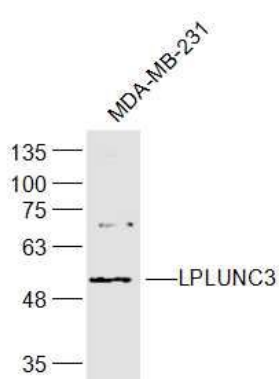
Gene ID	359710
Other Names	BPI fold-containing family B member 3, Ligand-binding protein RYA3, Long palate, lung and nasal epithelium carcinoma-associated protein 3, BPIFB3, C20orf185, LPLUNC3
Dilution	WB=1:500-2000,IHC-P=1:100-500,IHC-F=1:100-500,ICC=1:100-500,IF=1:100-500,ELISA=1:5000-10000
Format	0.01M TBS(pH7.4) with 1% BSA, 0.09% (W/V) sodium azide and 50% Glyce
Storage	Store at -20 °C for one year. Avoid repeated freeze/thaw cycles. When reconstituted in sterile pH 7.4 0.01M PBS or diluent of antibody the antibody is stable for at least two weeks at 2-4 °C.

Protein Information

Name	BPIFB3 (HGNC:16178)
Synonyms	C20orf185, LPLUNC3

Function	May have the capacity to recognize and bind specific classes of odorants. May act as a carrier molecule, transporting odorants across the mucus layer to access receptor sites. May serve as a primary defense mechanism by recognizing and removing potentially harmful odorants or pathogenic microorganisms from the mucosa or clearing excess odorant from mucus to enable new odorant stimuli to be received (By similarity).
Cellular Location	Secreted. Cytoplasm. Note=According to PubMed:12837268, it is cytoplasmic
Tissue Location	Detected in nasal septal epithelium.

Images



Sample:
MDA-MB-231(Human) Cell Lysate at 30 ug
Primary: Anti-LPLUNC3 (AP57055) at 1/300 dilution
Secondary: IRDye800CW Goat Anti-Rabbit IgG at 1/20000 dilution
Predicted band size: 48 kD
Observed band size: 53 kD

Please note: All products are 'FOR RESEARCH USE ONLY. NOT FOR USE IN DIAGNOSTIC OR THERAPEUTIC PROCEDURES'.