

HSPA12A Polyclonal Antibody

Purified Rabbit Polyclonal Antibody (Pab)

Catalog # AP56939

Product Information

Application	WB, IHC-P, IHC-F, IF, ICC, E
Primary Accession	O43301
Reactivity	Rat, Pig, Dog, Bovine
Host	Rabbit
Clonality	Polyclonal
Calculated MW	74978
Physical State	Liquid
Immunogen	KLH conjugated synthetic peptide derived from human HSPA12A
Epitope Specificity	531-630/675
Isotype	IgG
Purity	affinity purified by Protein A
Buffer	0.01M TBS (pH7.4) with 1% BSA, 0.02% Proclin300 and 50% Glycerol.
SIMILARITY	Belongs to the heat shock protein 70 family.
Important Note	This product as supplied is intended for research use only, not for use in human, therapeutic or diagnostic applications.
Background Descriptions	The heat shock proteins (HSPs) comprise a group of highly conserved, abundantly expressed proteins with diverse functions, including the assembly and sequestering of multi-protein complexes, the transportation of nascent polypeptide chains across cellular membranes and the regulation of protein folding. HSPA12A (heat shock 70kDa protein 12A) is a 675 amino acid protein that belongs to the HSP 70 family and is expressed in muscle, kidney and brain where it may play a role in cellular metabolism and regulation of neuronal function. The gene encoding HSPA12A maps to human chromosome 10, which houses over 1,200 genes and comprises nearly 4.5% of the human genome. Defects in some of the genes that map to chromosome 10 are associated with Charcot-Marie Tooth disease, Jackson-Weiss syndrome, Usher syndrome, nonsyndromic deafness, Wolman's syndrome, Cowden syndrome, multiple endocrine neoplasia type 2 and porphyria.

Additional Information

Gene ID	259217
Other Names	Heat shock 70 kDa protein 12A, HSPA12A, KIAA0417
Target/Specificity	Widely expressed with highest levels in brain, kidney and muscle.
Dilution	WB=1:500-2000,IHC-P=1:100-500,IHC-F=1:100-500,ICC=1:100-500,IF=1:200-800,ELISA=1:5000-10000
Format	0.01M TBS(pH7.4) with 1% BSA, 0.09% (W/V) sodium azide and 50% Glyce

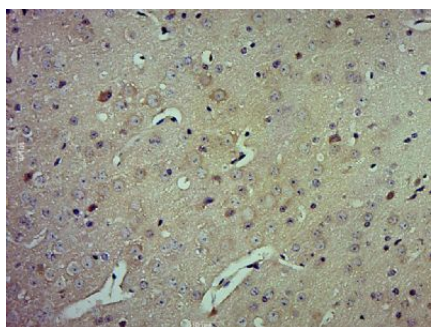
Storage

Store at -20 °C for one year. Avoid repeated freeze/thaw cycles. When reconstituted in sterile pH 7.4 0.01M PBS or diluent of antibody the antibody is stable for at least two weeks at 2-4 °C.

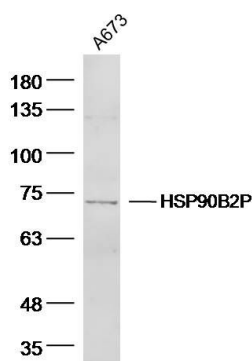
Protein Information

Name	HSPA12A
Synonyms	KIAA0417
Function	Adapter protein for SORL1, but not SORT1. Delays SORL1 internalization and affects SORL1 subcellular localization.
Cellular Location	Cytoplasm {ECO:0000250 UniProtKB:Q8K0U4}. Nucleus {ECO:0000250 UniProtKB:Q8K0U4}
Tissue Location	Widely expressed with highest levels in brain, kidney and muscle.

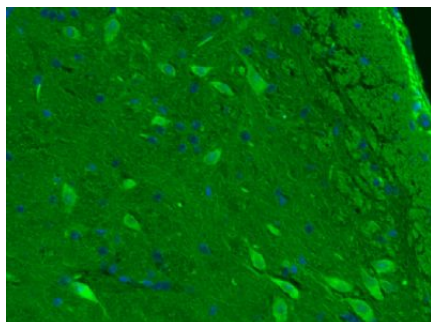
Images



Paraformaldehyde-fixed, paraffin embedded (Mouse brain); Antigen retrieval by boiling in sodium citrate buffer (pH6.0) for 15min; Block endogenous peroxidase by 3% hydrogen peroxide for 20 minutes; Blocking buffer (normal goat serum) at 37°C for 30min; Antibody incubation with (HSPA12A) Polyclonal Antibody, Unconjugated (AP56939) at 1:500 overnight at 4°C, followed by a conjugated secondary (sp-0023) for 20 minutes and DAB staining.



Sample: A673 Cell (Human) Lysate at 40 ug
Primary: Anti-HSPA12A (AP56939) at 1/300 dilution
Secondary: IRDye800CW Goat Anti-Rabbit IgG at 1/20000 dilution
Predicted band size: 75 kD
Observed band size: 73 kD



Paraformaldehyde-fixed, paraffin embedded (Mouse brain); Antigen retrieval by boiling in sodium citrate buffer (pH6.0) for 15min; Block endogenous peroxidase by 3% hydrogen peroxide for 20 minutes; Blocking buffer (normal goat serum) at 37°C for 30min; Incubation: Anti-HSPA12A Antibody, conjugated (AP56939-FITC) 1:400, 1.5 hours at 37°C; DAPI (5ug/ml, blue, C-0033) was used to stain the cell nuclei.

Please note: All products are 'FOR RESEARCH USE ONLY. NOT FOR USE IN DIAGNOSTIC OR THERAPEUTIC PROCEDURES'.