

# HCFC1R1 Polyclonal Antibody

Purified Rabbit Polyclonal Antibody (Pab)

Catalog # AP56669

## Product Information

---

<b>Application</b>	IHC-P, IHC-F, IF, ICC, E
<b>Primary Accession</b>	<a href="#">Q9NWW0</a>
<b>Reactivity</b>	Rat, Pig, Dog, Bovine
<b>Host</b>	Rabbit
<b>Clonality</b>	Polyclonal
<b>Calculated MW</b>	15291
<b>Physical State</b>	Liquid
<b>Immunogen</b>	KLH conjugated synthetic peptide derived from human HCFC1R1
<b>Epitope Specificity</b>	1-100/138
<b>Isotype</b>	IgG
<b>Purity</b>	affinity purified by Protein A
<b>Buffer</b>	0.01M TBS (pH7.4) with 1% BSA, 0.02% Proclin300 and 50% Glycerol.
<b>SUBCELLULAR LOCATION</b>	Cytoplasm. Nucleus. Shuttles between the nucleus and cytoplasm in a CRM1-dependent manner.
<b>Important Note</b>	This product as supplied is intended for research use only, not for use in human, therapeutic or diagnostic applications.
<b>Background Descriptions</b>	PSTPIP1 is a 416 amino acid protein that localizes to both the cytoplasm and the cytoskeleton and contains one SH3 domain and one FCH domain. Expressed at high levels in T cells and spleen and present at lower levels in thymus, lung, placenta and small intestine, PSTPIP1 interacts with CD2AP, BDP1 and c-Abl and is involved in the regulation of the Actin cytoskeleton, possibly functioning as a scaffold protein that may promote Actin polymerization. Defects in the gene encoding PSTPIP1 are the cause of PAPA syndrome (PAPAS), an autosomal dominant disease characterized by recurring inflammatory episodes that affect skin and joint tissue. Multiple isoforms of PSTPIP1 exist due to alternative splicing events.

## Additional Information

---

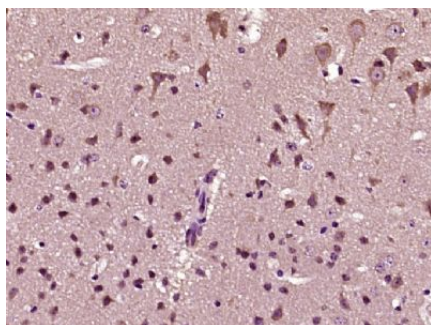
<b>Gene ID</b>	54985
<b>Other Names</b>	Host cell factor C1 regulator 1, HCF-1 beta-propeller-interacting protein, HCFC1R1, HPIP
<b>Target/Specificity</b>	Widely expressed.
<b>Dilution</b>	IHC-P=1:100-500,IHC-F=1:100-500,ICC=1:100-500,IF=1:100-500,ELISA=1:5000-10000
<b>Format</b>	0.01M TBS(pH7.4) with 1% BSA, 0.09% (W/V) sodium azide and 50% Glyce

<b>Storage</b>	Store at -20 °C for one year. Avoid repeated freeze/thaw cycles. When reconstituted in sterile pH 7.4 0.01M PBS or diluent of antibody the antibody is stable for at least two weeks at 2-4 °C.
----------------	---

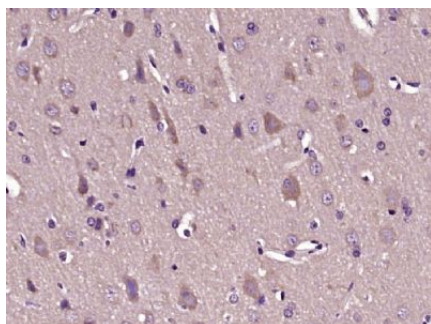
## Protein Information

<b>Name</b>	HCFC1R1
<b>Synonyms</b>	HPIP
<b>Function</b>	Regulates HCFC1 activity by modulating its subcellular localization. Overexpression of HCFC1R1 leads to accumulation of HCFC1 in the cytoplasm. HCFC1R1-mediated export may provide the pool of cytoplasmic HCFC1 required for import of virion-derived VP16 into the nucleus.
<b>Cellular Location</b>	Cytoplasm. Nucleus. Note=Shuttles between the nucleus and cytoplasm in a CRM1-dependent manner
<b>Tissue Location</b>	Widely expressed..

## Images



Paraformaldehyde-fixed, paraffin embedded (mouse brain tissue); Antigen retrieval by boiling in sodium citrate buffer (pH6.0) for 15min; Block endogenous peroxidase by 3% hydrogen peroxide for 20 minutes; Blocking buffer (normal goat serum) at 37°C for 30min; Antibody incubation with (HCFC1R1) Polyclonal Antibody, Unconjugated (AP56669) at 1:400 overnight at 4°C, followed by operating according to SP Kit(Rabbit) (sp-0023) instructions and DAB staining.



Paraformaldehyde-fixed, paraffin embedded (rat brain tissue); Antigen retrieval by boiling in sodium citrate buffer (pH6.0) for 15min; Block endogenous peroxidase by 3% hydrogen peroxide for 20 minutes; Blocking buffer (normal goat serum) at 37°C for 30min; Antibody incubation with (HCFC1R1) Polyclonal Antibody, Unconjugated (AP56669) at 1:400 overnight at 4°C, followed by operating according to SP Kit(Rabbit) (sp-0023) instructions and DAB staining.

Please note: All products are 'FOR RESEARCH USE ONLY. NOT FOR USE IN DIAGNOSTIC OR THERAPEUTIC PROCEDURES'.