

SCGF Polyclonal Antibody

Purified Rabbit Polyclonal Antibody (Pab)

Catalog # AP56646

Product Information

Application	IHC-P, IHC-F, IF, ICC
Primary Accession	Q9Y240
Reactivity	Human
Host	Rabbit
Clonality	Polyclonal
Calculated MW	35695
Physical State	Liquid
Immunogen	KLH conjugated synthetic peptide derived from human SCGF
Epitope Specificity	101-200/323
Isotype	IgG
Purity	affinity purified by Protein A
Buffer	0.01M TBS (pH7.4) with 1% BSA, 0.02% Proclin300 and 50% Glycerol.
SUBCELLULAR LOCATION	Cytoplasm. Secreted.
SIMILARITY	Contains 1 C-type lectin domain.
Post-translational modifications	O-glycosylated. Probably sulfated on the O-glycans.
Important Note	This product as supplied is intended for research use only, not for use in human, therapeutic or diagnostic applications.
Background Descriptions	SCGF is a cytokine for primitive hematopoietic progenitor cells and exhibits species-specific activity. It is predominantly expressed in proliferating chondrocytes, bone marrow cells, the periosteum and the perichondrium of skeletal tissues. SCGF contains an N-terminal Arg-Gly-Asp triplet (RGD triplet), leucine zipper domains, a C-terminal C-type lectin domain and numerous potential glycosylation sites. It has burst-promoting activity and granulocyte/macrophage colony-promoting activity in vitro. SCGF is directly correlated to granulocyte recovery following stem cell transplantation and thus can be an indicator of hematopoietic recovery following stem cell transplantation.

Additional Information

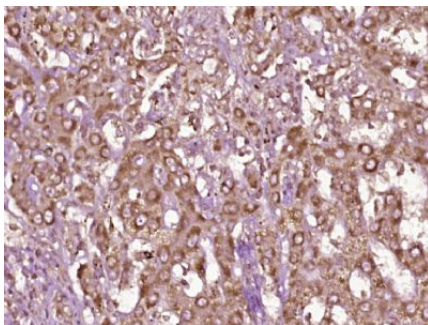
Gene ID	6320
Other Names	C-type lectin domain family 11 member A, C-type lectin superfamily member 3, Lymphocyte secreted C-type lectin, Osteolectin, Stem cell growth factor, p47, CLEC11A, CLECSF3, LSLCL, SCGF
Target/Specificity	Expressed in skeletal tissues including bone marrow, chondrocytes, primary ossification center-associated cells, the perichondrium and periosteum. Lower levels of expression were detected in spleen, thymus, appendix and fetal liver.

Dilution	IHC-P=1:100-500,IHC-F=1:100-500,ICC=1:100-500,IF=1:100-500
Format	0.01M TBS(pH7.4) with 1% BSA, 0.09% (W/V) sodium azide and 50% Glyce
Storage	Store at -20 °C for one year. Avoid repeated freeze/thaw cycles. When reconstituted in sterile pH 7.4 0.01M PBS or diluent of antibody the antibody is stable for at least two weeks at 2-4 °C.

Protein Information

Name	CLEC11A
Synonyms	CLECSF3, LSLCL, SCGF
Function	Promotes osteogenesis by stimulating the differentiation of mesenchymal progenitors into mature osteoblasts (PubMed: 27976999). Important for repair and maintenance of adult bone (By similarity).
Cellular Location	Cytoplasm. Secreted
Tissue Location	Expressed in skeletal tissues including bone marrow, chondrocytes, primary ossification center-associated cells, the perichondrium and periosteum. Lower levels of expression were detected in spleen, thymus, appendix and fetal liver

Images



Paraformaldehyde-fixed, paraffin embedded (human liver carcinoma); Antigen retrieval by boiling in sodium citrate buffer (pH6.0) for 15min; Block endogenous peroxidase by 3% hydrogen peroxide for 20 minutes; Blocking buffer (normal goat serum) at 37°C for 30min; Antibody incubation with (SCGF) Polyclonal Antibody, Unconjugated (AP56646) at 1:400 overnight at 4°C, followed by operating according to SP Kit(Rabbit) (sp-0023) instructions and DAB staining.

Please note: All products are 'FOR RESEARCH USE ONLY. NOT FOR USE IN DIAGNOSTIC OR THERAPEUTIC PROCEDURES'.