

TRAF5 Rabbit pAb

TRAF5 Rabbit pAb
Catalog # AP56319

Product Information

Application	WB, IHC-P, IHC-F, IF
Primary Accession	O00463
Reactivity	Human, Rat
Predicted	Pig, Horse
Host	Rabbit
Clonality	Polyclonal
Calculated MW	64406
Physical State	Liquid
Immunogen	KLH conjugated synthetic peptide derived from human TRAF5
Epitope Specificity	101-200/557
Isotype	IgG
Purity	affinity purified by Protein A
Buffer	0.01M TBS (pH7.4) with 1% BSA, 0.02% Proclin300 and 50% Glycerol.
SUBCELLULAR LOCATION	Cytoplasm.
SIMILARITY	Belongs to the TNF receptor-associated factor family. A subfamily. Contains 1 MATH domain. Contains 1 RING-type zinc finger. Contains 2 TRAF-type zinc fingers.
Important Note	This product as supplied is intended for research use only, not for use in human, therapeutic or diagnostic applications.
Background Descriptions	The scaffold protein encoded by this gene is a member of the tumor necrosis factor receptor-associated factor (TRAF) protein family and contains a meprin and TRAF homology (MATH) domain, a RING-type zinc finger, and two TRAF-type zinc fingers. TRAF proteins are associated with, and mediate signal transduction from members of the TNF receptor superfamily. This protein is one of the components of a multiple protein complex which binds to tumor necrosis factor (TNF) receptor cytoplasmic domains and mediates TNF-induced activation. Alternate transcriptional splice variants have been characterized. [provided by RefSeq, Jul 2008]

Additional Information

Gene ID	7188
Other Names	TNF receptor-associated factor 5, RING finger protein 84, TRAF5, RNF84
Target/Specificity	Expressed in spleen, thymus, prostate, testis, ovary, small intestine, colon, and peripheral blood.
Dilution	WB=1:500-2000,IHC-P=1:100-500,IHC-F=1:100-500,IF=1:100-500
Storage	Store at -20 °C for one year. Avoid repeated freeze/thaw cycles. When

reconstituted in sterile pH 7.4 0.01M PBS or diluent of antibody the antibody is stable for at least two weeks at 2-4 °C.

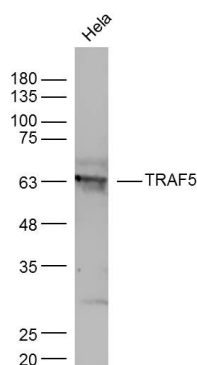
Protein Information

Name	TRAF5
Synonyms	RNF84
Function	Adapter protein and signal transducer that links members of the tumor necrosis factor receptor family to different signaling pathways by association with the receptor cytoplasmic domain and kinases. Mediates activation of NF-kappa-B and probably JNK. Seems to be involved in apoptosis. Plays a role in mediating activation of NF- kappa-B by EIF2AK2/PKR.
Cellular Location	Cytoplasm. Cytoplasm, cytosol
Tissue Location	Expressed in spleen, thymus, prostate, testis, ovary, small intestine, colon, and peripheral blood

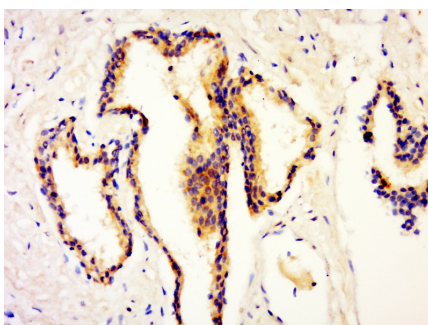
Background

The scaffold protein encoded by this gene is a member of the tumor necrosis factor receptor-associated factor (TRAF) protein family and contains a meprin and TRAF homology (MATH) domain, a RING-type zinc finger, and two TRAF-type zinc fingers. TRAF proteins are associated with, and mediate signal transduction from members of the TNF receptor superfamily. This protein is one of the components of a multiple protein complex which binds to tumor necrosis factor (TNF) receptor cytoplasmic domains and mediates TNF-induced activation. Alternate transcriptional splice variants have been characterized. [provided by RefSeq, Jul 2008]

Images



Sample:
Hela Cell (Human) Lysate at 30 ug
Primary: Anti- TRAF5 (AP56319) at 1/300 dilution
Secondary: IRDye800CW Goat Anti-Rabbit IgG at 1/20000 dilution
Predicted band size: 64 kD
Observed band size: 64 kD



Paraformaldehyde-fixed, paraffin embedded (rat prostate); Antigen retrieval by boiling in sodium citrate buffer (pH6.0) for 15min; Block endogenous peroxidase by 3% hydrogen peroxide for 20 minutes; Blocking buffer (normal goat serum) at 37°C for 30min; Antibody incubation with (TRAF5) Polyclonal Antibody, Unconjugated (AP56319) at 1:5000 overnight at 4°C, followed by a conjugated secondary (sp-0023) for 20 minutes and DAB staining.

Please note: All products are 'FOR RESEARCH USE ONLY. NOT FOR USE IN DIAGNOSTIC OR THERAPEUTIC PROCEDURES'.