

REG3G Antibody (Center)

Affinity Purified Rabbit Polyclonal Antibody (Pab)
Catalog # AP5606c

Product Information

Application	WB, IHC-P, FC, E
Primary Accession	Q6UW15
Other Accession	NP_001008388.1
Reactivity	Human, Rat, Mouse
Host	Rabbit
Clonality	Polyclonal
Isotype	Rabbit IgG
Calculated MW	19330
Antigen Region	89-116

Additional Information

Gene ID	130120
Other Names	Regenerating islet-derived protein 3-gamma, REG-3-gamma, Pancreatitis-associated protein 1B, PAP-1B, Pancreatitis-associated protein IB, PAP IB, Regenerating islet-derived protein III-gamma, REG III, Reg III-gamma, Regenerating islet-derived protein 3-gamma 165 kDa form, Regenerating islet-derived protein 3-gamma 15 kDa form, REG3G, PAP1B
Target/Specificity	This REG3G antibody is generated from rabbits immunized with a KLH conjugated synthetic peptide between 89-116 amino acids of human REG3G.
Dilution	WB~~1:1000 IHC-P~~1:100~500 FC~~1:10~50 E~~Use at an assay dependent concentration.
Format	Purified polyclonal antibody supplied in PBS with 0.09% (W/V) sodium azide. This antibody is purified through a protein A column, followed by peptide affinity purification.
Storage	Maintain refrigerated at 2-8°C for up to 2 weeks. For long term storage store at -20°C in small aliquots to prevent freeze-thaw cycles.
Precautions	REG3G Antibody (Center) is for research use only and not for use in diagnostic or therapeutic procedures.

Protein Information

Name	REG3G (HGNC:29595)
Synonyms	PAP1B

Function	Bactericidal C-type lectin which acts exclusively against Gram-positive bacteria and mediates bacterial killing by binding to surface-exposed carbohydrate moieties of peptidoglycan. Restricts bacterial colonization of the intestinal epithelial surface and consequently limits activation of adaptive immune responses by the microbiota.
Cellular Location	Secreted {ECO:0000250 UniProtKB:P42854}. Cytoplasm {ECO:0000250 UniProtKB:P42854}
Tissue Location	Predominantly expressed in pancreas, where it may be restricted to exocrine pancreas. Moderate expression levels in testis and weak in heart, kidney and placenta

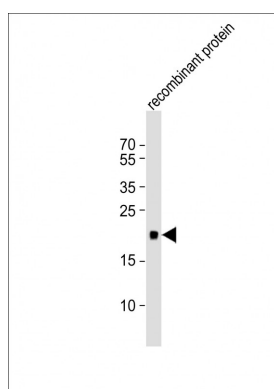
Background

REG3G might be a stress protein involved in the control of bacterial proliferation (By similarity).

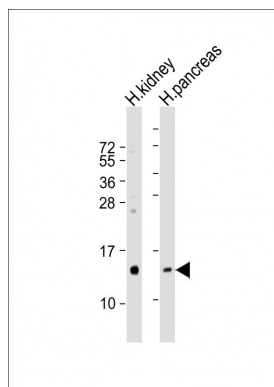
References

- Taylor-Fishwick, D.A., et al. J. Histochem. Cytochem. 56(2):183-191(2008)
Hamblet, N.S., et al. Pancreas 36(1):1-9(2008)
Hillier, L.W., et al. Nature 434(7034):724-731(2005)
Laurine, E., et al. Biochim. Biophys. Acta 1727(3):177-187(2005)

Images

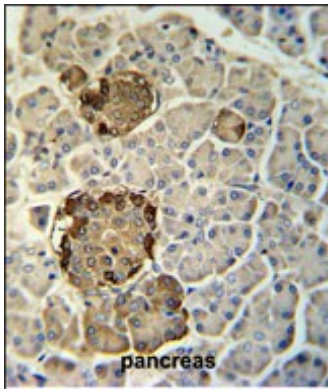


Anti-REG3G Antibody (Center) at 1:1000 dilution + recombinant protein lysates. Lysates/proteins at 20 µg per lane. Secondary Goat Anti-Rabbit IgG, (H+L), Peroxidase conjugated at 1/10000 dilution. Predicted band size : 19 kDa. Blocking/Dilution buffer: 5% NFDM/TBST.



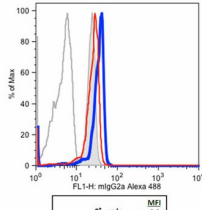
All lanes : Anti-REG3G Antibody (Center) at 1:100 dilution
Lane 1: human kidney lysates Lane 2: human pancreas lysates. Lysates/proteins at 20 µg per lane. Secondary Goat Anti-Rabbit IgG, (H+L), Peroxidase conjugated at 1/10000 dilution. Predicted band size : 19 kDa. Blocking/Dilution buffer: 5% NFDM/TBST.

REG3G Antibody (Center) (Cat. #AP5606c) immunohistochemistry analysis in formalin fixed and paraffin embedded human pancreas tissue followed by peroxidase conjugation of the secondary antibody and DAB staining. This data demonstrates the use of the



REG3G Antibody (Center) for immunohistochemistry.
Clinical relevance has not been evaluated.

Abgent antibody neutralizes Reg3 γ binding to *S. aureus*



Reg3g binds to Staphylococcus aureus and the antibody did block some of this binding(Kindly offered by Dr. Choi).

Citations

- [The colonic macrophage transcription factor RBP-J orchestrates intestinal immunity against bacterial pathogens](#)
- [Autophagy in pancreatic acinar cells in caerulein-treated mice: immunolocalization of related proteins and their potential as markers of pancreatitis.](#)
- [Innate Stat3-mediated induction of the antimicrobial protein Reg3 \$\gamma\$ is required for host defense against MRSA pneumonia.](#)
- [Reg3g Promotes Pancreatic Carcinogenesis in a Murine Model of Chronic Pancreatitis.](#)
- [Commensal bacteria direct selective cargo sorting to promote symbiosis.](#)
- [Foxo1 controls gut homeostasis and commensalism by regulating mucus secretion.](#)
- [Interleukin-22 signaling attenuates necrotizing enterocolitis by promoting epithelial cell regeneration.](#)
- [Myocardial Accumulations of Reg3A, Reg3 \$\gamma\$ and Oncostatin M Are Associated with the Formation of Granulomata in Patients with Cardiac Sarcoidosis.](#)

Please note: All products are 'FOR RESEARCH USE ONLY. NOT FOR USE IN DIAGNOSTIC OR THERAPEUTIC PROCEDURES'.