

Gamma-Adaptin Rabbit pAb

Gamma-Adaptin Rabbit pAb
Catalog # AP56062

Product Information

Application	WB, IHC-P, IHC-F, IF
Primary Accession	O43747
Reactivity	Human, Mouse, Rat
Predicted	Chicken, Dog, Pig, Rabbit
Host	Rabbit
Clonality	Polyclonal
Calculated MW	91351
Physical State	Liquid
Immunogen	KLH conjugated synthetic peptide derived from human Gamma-Adaptin
Epitope Specificity	721-822/822
Isotype	IgG
Purity	affinity purified by Protein A
Buffer	0.01M TBS (pH7.4) with 1% BSA, 0.02% Proclin300 and 50% Glycerol.
SUBCELLULAR LOCATION	Golgi apparatus. Cytoplasmic vesicle, clathrin-coated vesicle membrane; Peripheral membrane protein; Cytoplasmic side.
SIMILARITY	Belongs to the adaptor complexes large subunit family. Contains 1 GAE domain.
SUBUNIT	Adaptor protein complex 1 (AP-1) is a heterotetramer composed of two large adaptins (gamma-type subunit AP1G1 and beta-type subunit AP1B1), a medium adaptin (mu-type subunit AP1M1 or AP1M2) and a small adaptin (sigma-type subunit AP1S1 or AP1S2 or AP1S3). Binds RABEP1 and SYNRG. Interacts (via GAE domain) with AP1AR (via coiled-coil domain).
Important Note	This product as supplied is intended for research use only, not for use in human, therapeutic or diagnostic applications.
Background Descriptions	Adaptins are important components of clathrin-coated vesicles transporting ligand-receptor complexes from the plasma membrane or from the trans-Golgi network to lysosomes. The adaptin family of proteins is composed of four classes of molecules named alpha, beta, beta prime and gamma adaptins. Adaptins, together with medium and small subunits, form a heterotetrameric complex called an adaptor, whose role is to promote the formation of clathrin-coated pits and vesicles. The protein encoded by this gene is a gamma-adaptin protein and it belongs to the adaptor complexes large subunits family.

Additional Information

Gene ID	164
Other Names	AP-1 complex subunit gamma-1, Adaptor protein complex AP-1 subunit gamma-1, Adaptor-related protein complex 1 subunit gamma-1, Clathrin assembly protein complex 1 gamma-1 large chain, Gamma1-adaptin, Golgi

adaptor HA1/AP1 adaptin subunit gamma-1, AP1G1, ADTG, CLAPG1

Target/Specificity	Widely expressed.
Dilution	WB=1:500-2000,IHC-P=1:100-500,IHC-F=1:100-500,ICC/IF=1:100-500,IF=1:100-500
Storage	Store at -20 °C for one year. Avoid repeated freeze/thaw cycles. When reconstituted in sterile pH 7.4 0.01M PBS or diluent of antibody the antibody is stable for at least two weeks at 2-4 °C.

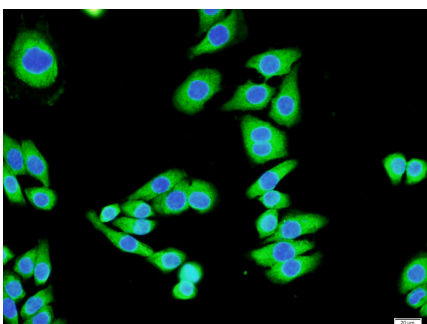
Protein Information

Name	AP1G1 {ECO:0000303 PubMed:34102099, ECO:0000312 HGNC:HGNC:555}
Function	Subunit of clathrin-associated adaptor protein complex 1 that plays a role in protein sorting in the late-Golgi/trans-Golgi network (TGN) and/or endosomes. The AP complexes mediate both the recruitment of clathrin to membranes and the recognition of sorting signals within the cytosolic tails of transmembrane cargo molecules. In association with AFTPH/aftiphilin in the aftiphilin/p200/gamma-synergin complex, involved in the trafficking of transferrin from early to recycling endosomes, and the membrane trafficking of furin and the lysosomal enzyme cathepsin D between the trans-Golgi network (TGN) and endosomes (PubMed: 15758025).
Cellular Location	Golgi apparatus. Cytoplasmic vesicle, clathrin-coated vesicle membrane; Peripheral membrane protein; Cytoplasmic side. Cytoplasm, perinuclear region. Cytoplasmic vesicle, clathrin-coated vesicle. Membrane, clathrin-coated pit. Note=Component of the coat surrounding the cytoplasmic face of coated vesicles located at the Golgi complex (PubMed:12773381). Co-localizes with AFTPH/aftiphilin in the cytoplasm (PubMed:15758025).
Tissue Location	Widely expressed.

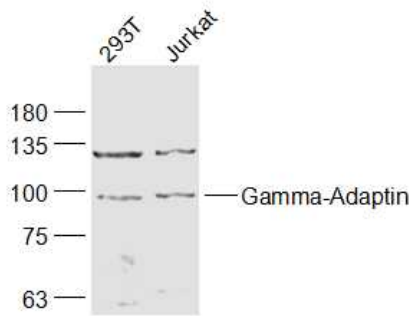
Background

Adaptins are important components of clathrin-coated vesicles transporting ligand-receptor complexes from the plasma membrane or from the trans-Golgi network to lysosomes. The adaptin family of proteins is composed of four classes of molecules named alpha, beta, beta prime and gamma adaptins. Adaptins, together with medium and small subunits, form a heterotetrameric complex called an adaptor, whose role is to promote the formation of clathrin-coated pits and vesicles. The protein encoded by this gene is a gamma-adaptin protein and it belongs to the adaptor complexes large subunits family.

Images



Cell culture(MCF7); Paraformaldehyde-fixed; Incubated by 0.3% Triton-100 for 20 min; Blocking buffer (normal goat serum) at 37°C for 30min; Antibody incubation with (Gamma-Adaptin) Polyclonal Antibody, Unconjugated (AP56062) at 1:200 overnight at 4°C, followed by a conjugated secondary antibody (AP56062-FITC) for 90 minutes and DAPI staining.



Sample:

293T(Human) Cell Lysate at 30 ug

Jurkat(Human) Cell Lysate at 30 ug

Primary: Anti-Gamma-Adaptin (AP56062) at 1/1000

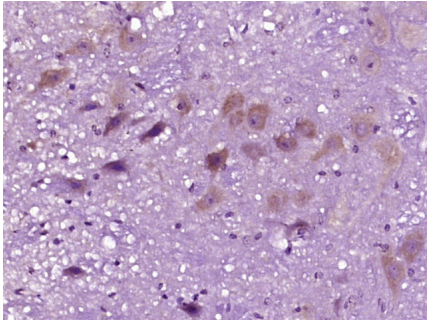
dilution

Secondary: IRDye800CW Goat Anti-Rabbit IgG at 1/20000

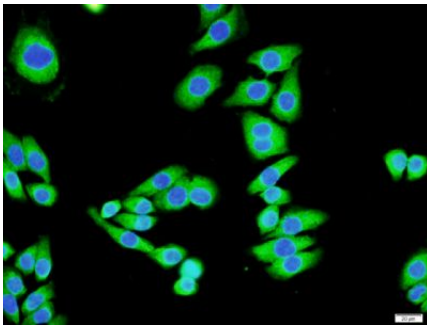
dilution

Predicted band size: 91 kD

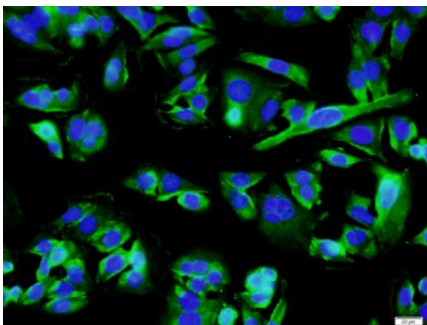
Observed band size: 91 kD



Paraformaldehyde-fixed, paraffin embedded (mouse brain tissue); Antigen retrieval by boiling in sodium citrate buffer (pH6.0) for 15min; Block endogenous peroxidase by 3% hydrogen peroxide for 20 minutes; Blocking buffer (normal goat serum) at 37°C for 30min; Antibody incubation with (Gamma-Adaptin) Polyclonal Antibody, Unconjugated (AP56062) at 1:400 overnight at 4°C, followed by operating according to SP Kit(Rabbit) (sp-0023) instructions and DAB staining.



Cell culture(MCF7); Paraformaldehyde-fixed; Incubated by 0.3% Triton-100 for 20 min; Blocking buffer (normal goat serum) at 37°C for 30min; Antibody incubation with (Gamma-Adaptin) Polyclonal Antibody, Unconjugated (AP56062) at 1:200 overnight at 4°C, followed by a conjugated secondary antibody (bs-0295G-FITC) for 90 minutes and DAPI staining.



Cell culture(SW480); Paraformaldehyde-fixed; Incubated by 0.3% Triton-100 for 20 min; Blocking buffer (normal goat serum) at 37°C for 30min; Antibody incubation with (Gamma-Adaptin) Polyclonal Antibody, Unconjugated (AP56062) at 1:200 overnight at 4°C, followed by a conjugated secondary antibody (bs-0295G-FITC) for 90 minutes and DAPI staining.

Please note: All products are 'FOR RESEARCH USE ONLY. NOT FOR USE IN DIAGNOSTIC OR THERAPEUTIC PROCEDURES'.