

CENPC1 Polyclonal Antibody

Purified Rabbit Polyclonal Antibody (Pab)

Catalog # AP56038

Product Information

Application	WB, IHC-P, IHC-F, IF, ICC, E
Primary Accession	Q03188
Reactivity	Rat, Dog
Host	Rabbit
Clonality	Polyclonal
Calculated MW	106834
Physical State	Liquid
Immunogen	KLH conjugated synthetic peptide derived from human CENPC1
Epitope Specificity	701-800/943
Isotype	IgG
Purity	affinity purified by Protein A
Buffer	0.01M TBS (pH7.4) with 1% BSA, 0.02% Proclin300 and 50% Glycerol.
SUBCELLULAR LOCATION	Nucleus. Chromosome, centromere, kinetochore. Note=Localizes exclusively in the kinetochore domain of centromeres.
SIMILARITY	Belongs to the CENPC family.
SUBUNIT	Oligomer. Component of the CENPA-NAC complex, at least composed of CENPA, CENPC, CENPH, CENPM, CENPN, CENPT and MLF1IP/CENPU. The CENPA-NAC complex interacts with the CENPA-CAD complex, composed of CENPI, CENPK, CENPL, CENPO, CENPP, CENPQ, CENPR and CENPS. Binds to DAXX. Interacts directly with CENPA.
Important Note	This product as supplied is intended for research use only, not for use in human, therapeutic or diagnostic applications.
Background Descriptions	Centromere protein C 1 is a centromere autoantigen and a component of the inner kinetochore plate. The protein is required for maintaining proper kinetochore size and a timely transition to anaphase. A putative pseudogene exists on chromosome 12.

Additional Information

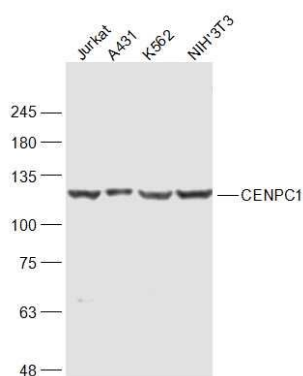
Gene ID	1060
Other Names	Centromere protein C, CENP-C, Centromere autoantigen C, Centromere protein C 1, CENP-C 1, Interphase centromere complex protein 7, CENPC, CENPC1, ICEN7
Dilution	WB=1:500-2000,IHC-P=1:100-500,IHC-F=1:100-500,ICC=1:100-500,IF=1:100-500,ELISA=1:5000-10000
Format	0.01M TBS(pH7.4) with 1% BSA, 0.09% (W/V) sodium azide and 50% Glyce
Storage	Store at -20 °C for one year. Avoid repeated freeze/thaw cycles. When

reconstituted in sterile pH 7.4 0.01M PBS or diluent of antibody the antibody is stable for at least two weeks at 2-4 °C.

Protein Information

Name	CENPC
Synonyms	CENPC1, ICEN7
Function	Component of the CENPA-NAC (nucleosome-associated) complex, a complex that plays a central role in assembly of kinetochore proteins, mitotic progression and chromosome segregation. The CENPA-NAC complex recruits the CENPA-CAD (nucleosome distal) complex and may be involved in incorporation of newly synthesized CENPA into centromeres. CENPC recruits DNA methylation and DNMT3B to both centromeric and pericentromeric satellite repeats and regulates the histone code in these regions.
Cellular Location	Nucleus. Chromosome, centromere, kinetochore. Chromosome, centromere. Note=Localizes exclusively in the kinetochore domain of centromeres.

Images



Sample:

Jurkat(Human) Cell Lysate at 30 ug
A431(Human) Cell Lysate at 30 ug
K562(Human) Cell Lysate at 30 ug
NIH/3T3(Mouse) Cell Lysate at 30 ug
Primary: Anti-CENPC1 (AP56038) at 1/1000 dilution
Secondary: IRDye800CW Goat Anti-Rabbit IgG at 1/20000 dilution
Predicted band size: 107 kD
Observed band size: 120 kD

Please note: All products are 'FOR RESEARCH USE ONLY. NOT FOR USE IN DIAGNOSTIC OR THERAPEUTIC PROCEDURES'.