

C8orf42 Polyclonal Antibody

Purified Rabbit Polyclonal Antibody (Pab)

Catalog # AP55926

Product Information

Application	WB, IHC-P, IHC-F, IF, ICC, E
Primary Accession	Q86YL5
Reactivity	Rat
Host	Rabbit
Clonality	Polyclonal
Calculated MW	20403
Physical State	Liquid
Immunogen	KLH conjugated synthetic peptide derived from human C8orf42
Epitope Specificity	51-150/185
Isotype	IgG
Purity	affinity purified by Protein A
Buffer	0.01M TBS (pH7.4) with 1% BSA, 0.02% Proclin300 and 50% Glycerol.
SUBCELLULAR LOCATION	Nucleus. Cytoplasm.
Important Note	This product as supplied is intended for research use only, not for use in human, therapeutic or diagnostic applications.
Background Descriptions	Made up of nearly 146 million bases, chromosome 8 encodes about 800 genes. Translocation of portions of chromosome 8 with amplifications of the c-Myc gene are found in some leukemias and lymphomas, and typically associated with a poor prognosis. Portions of chromosome 8 have been linked to schizophrenia and bipolar disorder. Trisomy 8, also known as Warkany syndrome 2, most often results in early miscarriage but is occasionally seen in a mosaic form in surviving patients who suffer to a varying degree from a number of symptoms including retarded mental and motor development, and certain facial and developmental defects. WRN is a DNA helicase encoded by chromosome 8 and shown defective in those with the early aging disorder Werner syndrome. Chromosome 8 is also associated with Pfeiffer syndrome, congenital hypothyroidism and Waardenburg syndrome. The C8orf42 gene product has been provisionally designated C8orf42 pending further characterization.

Additional Information

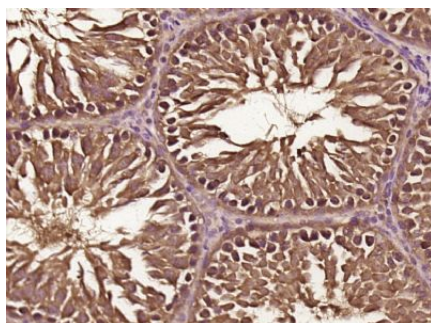
Gene ID	157695
Other Names	Testis development-related protein, Protein INM01, TDRP, C8orf42
Target/Specificity	Expressed in spermatogenic cells, especially in spermatocytes (at protein level).
Dilution	WB=1:500-2000,IHC-P=1:100-500,IHC-F=1:100-500,ICC=1:100-500,IF=1:100-500,ELISA=1:5000-10000

Format	0.01M TBS(pH7.4) with 1% BSA, 0.09% (W/V) sodium azide and 50% Glyce
Storage	Store at -20 °C for one year. Avoid repeated freeze/thaw cycles. When reconstituted in sterile pH 7.4 0.01M PBS or diluent of antibody the antibody is stable for at least two weeks at 2-4 °C.

Protein Information

Name	TDRP
Synonyms	C8orf42
Function	Contributes to normal sperm motility, but not essential for male fertility.
Cellular Location	Nucleus. Cytoplasm. Note=Mainly nuclear. Also detected in cytoplasm near the midpiece of the flagellum
Tissue Location	Expressed in spermatogenic cells, especially in spermatocytes (at protein level).

Images



Paraformaldehyde-fixed, paraffin embedded (rat testis tissue); Antigen retrieval by boiling in sodium citrate buffer (pH6.0) for 15min; Block endogenous peroxidase by 3% hydrogen peroxide for 20 minutes; Blocking buffer (normal goat serum) at 37°C for 30min; Antibody incubation with (C8orf42) Polyclonal Antibody, Unconjugated (AP55926) at 1:400 overnight at 4°C, followed by operating according to SP Kit(Rabbit) (sp-0023) instructions and DAB staining.

Please note: All products are 'FOR RESEARCH USE ONLY. NOT FOR USE IN DIAGNOSTIC OR THERAPEUTIC PROCEDURES'.