

C1QL3 Polyclonal Antibody

Purified Rabbit Polyclonal Antibody (Pab)

Catalog # AP55785

Product Information

Application	WB, IHC-P, IHC-F, IF, ICC, E
Primary Accession	Q5VWW1
Reactivity	Rat, Pig, Dog, Bovine
Host	Rabbit
Clonality	Polyclonal
Calculated MW	26719
Physical State	Liquid
Immunogen	KLH conjugated synthetic peptide derived from human C1QL3
Epitope Specificity	131-225/225
Isotype	IgG
Purity	affinity purified by Protein A
Buffer	0.01M TBS (pH7.4) with 1% BSA, 0.02% Proclin300 and 50% Glycerol.
SUBCELLULAR LOCATION	Secreted (Potential).
SIMILARITY	Contains 1 C1q domain. Contains 1 collagen-like domain.
SUBUNIT	Interacts with BAI3 (By similarity).
Important Note	This product as supplied is intended for research use only, not for use in human, therapeutic or diagnostic applications.
Background Descriptions	C1QL3 (Complement C1q Like 3) is a Protein Coding gene. An important paralog of this gene is C1QL1.

Additional Information

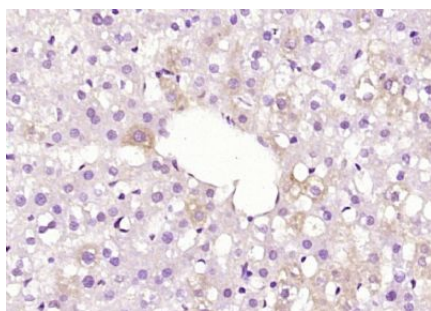
Gene ID	389941
Other Names	Complement C1q-like protein 3, C1q and tumor necrosis factor-related protein 13, C1q/TNF-related protein 13, C1QL3, CTRP13
Dilution	WB=1:500-2000,IHC-P=1:100-500,IHC-F=1:100-500,ICC=1:100-500,IF=1:100-500,ELISA=1:5000-10000
Format	0.01M TBS(pH7.4) with 1% BSA, 0.09% (W/V) sodium azide and 50% Glyce
Storage	Store at -20 °C for one year. Avoid repeated freeze/thaw cycles. When reconstituted in sterile pH 7.4 0.01M PBS or diluent of antibody the antibody is stable for at least two weeks at 2-4 °C.

Protein Information

Name	C1QL3
-------------	-------

Synonyms	CTRP13
Function	May regulate the number of excitatory synapses that are formed on hippocampus neurons. Has no effect on inhibitory synapses (By similarity). Plays a role in glucose homeostasis. Via AMPK signaling pathway, stimulates glucose uptake in adipocytes, myotubes and hepatocytes and enhances insulin-stimulated glucose uptake. In a hepatoma cell line, reduces the expression of gluconeogenic enzymes G6PC1 and PCK1 and hence decreases de novo glucose production (By similarity).
Cellular Location	Secreted.
Tissue Location	Highly expressed in adipose tissue, with expression levels at least 2 orders of magnitude higher than in other tissues, including brain and kidney.

Images



Paraformaldehyde-fixed, paraffin embedded (rat liver); Antigen retrieval by boiling in sodium citrate buffer (pH6.0) for 15min; Block endogenous peroxidase by 3% hydrogen peroxide for 20 minutes; Blocking buffer (normal goat serum) at 37°C for 30min; Antibody incubation with (C1QL3) Polyclonal Antibody, Unconjugated (AP55785) at 1:200 overnight at 4°C, followed by operating according to SP Kit(Rabbit) (sp-0023) instructions and DAB staining.

Please note: All products are 'FOR RESEARCH USE ONLY. NOT FOR USE IN DIAGNOSTIC OR THERAPEUTIC PROCEDURES'.