

# CRCP Rabbit pAb

CRCP Rabbit pAb  
Catalog # AP55397

## Product Information

---

<b>Application</b>	WB
<b>Primary Accession</b>	<a href="#">O75575</a>
<b>Reactivity</b>	Mouse, Rat
<b>Predicted</b>	Human, Dog, Horse, Sheep
<b>Host</b>	Rabbit
<b>Clonality</b>	Polyclonal
<b>Calculated MW</b>	16871
<b>Physical State</b>	Liquid
<b>Immunogen</b>	KLH conjugated synthetic peptide derived from human CRCP
<b>Epitope Specificity</b>	21-120/148
<b>Isotype</b>	IgG
<b>Purity</b>	affinity purified by Protein A
<b>Buffer</b>	0.01M TBS (pH7.4) with 1% BSA, 0.02% Proclin300 and 50% Glycerol.
<b>SUBCELLULAR LOCATION</b>	Nucleus. Cell membrane.
<b>SIMILARITY</b>	Belongs to the eukaryotic RPC9 RNA polymerase subunit family.
<b>Important Note</b>	This product as supplied is intended for research use only, not for use in human, therapeutic or diagnostic applications.
<b>Background Descriptions</b>	This gene encodes a membrane protein that functions as part of a receptor complex for a small neuropeptide that increases intracellular cAMP levels. Alternate transcriptional splice variants, encoding different isoforms, have been characterized. [provided by RefSeq, Jul 2008]

## Additional Information

---

<b>Gene ID</b>	27297
<b>Other Names</b>	DNA-directed RNA polymerase III subunit RPC9, RNA polymerase III subunit C9, Calcitonin gene-related peptide-receptor component protein, CGRP-RCP, CGRP-receptor component protein, CGRPRCP, HsC17, CRCP ( <a href="#">HGNC:17888</a> )
<b>Target/Specificity</b>	Ubiquitous. Most prevalent in testis.
<b>Dilution</b>	WB=1:500-2000
<b>Storage</b>	Store at -20 °C for one year. Avoid repeated freeze/thaw cycles. When reconstituted in sterile pH 7.4 0.01M PBS or diluent of antibody the antibody is stable for at least two weeks at 2-4 °C.

## Protein Information

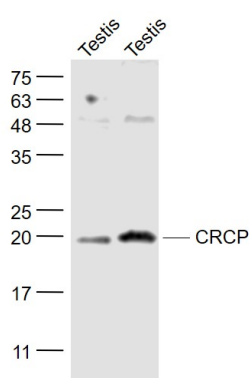
---

<b>Name</b>	CRCP ( <a href="#">HGNC:17888</a> )
<b>Function</b>	DNA-dependent RNA polymerase catalyzes the transcription of DNA into RNA using the four ribonucleoside triphosphates as substrates (PubMed: <a href="#">20413673</a> , PubMed: <a href="#">33558764</a> , PubMed: <a href="#">34675218</a> ). Specific peripheric component of RNA polymerase III (Pol III) which synthesizes small non-coding RNAs including 5S rRNA, snRNAs, tRNAs and miRNAs from at least 500 distinct genomic loci. With POLR3H/RPC8 forms a mobile stalk that protrudes from Pol III core and functions primarily in transcription initiation (By similarity) (PubMed: <a href="#">20413673</a> , PubMed: <a href="#">33558764</a> , PubMed: <a href="#">33558766</a> , PubMed: <a href="#">34675218</a> ). Pol III plays a key role in sensing and limiting infection by intracellular bacteria and DNA viruses. Acts as nuclear and cytosolic DNA sensor involved in innate immune response. Can sense non-self dsDNA that serves as template for transcription into dsRNA. The non-self RNA polymerase III transcripts, such as Epstein-Barr virus-encoded RNAs (EBERs) induce type I interferon and NF-kappa-B through the RIG-I pathway (PubMed: <a href="#">19609254</a> , PubMed: <a href="#">19631370</a> ).
<b>Cellular Location</b>	Nucleus. Cell membrane {ECO:0000250 UniProtKB:O35427}; Peripheral membrane protein {ECO:0000250 UniProtKB:O35427}; Cytoplasmic side {ECO:0000250 UniProtKB:O35427}
<b>Tissue Location</b>	Ubiquitous. Most prevalent in testis.

## Background

This gene encodes a membrane protein that functions as part of a receptor complex for a small neuropeptide that increases intracellular cAMP levels. Alternate transcriptional splice variants, encoding different isoforms, have been characterized. [provided by RefSeq, Jul 2008]

## Images



Sample:  
 Testis (Mouse) Lysate at 40 ug  
 Testis (Rat) Lysate at 40 ug  
 Primary: Anti- CRCP (AP55397) at 1/1000 dilution  
 Secondary: IRDye800CW Goat Anti-Rabbit IgG at 1/20000 dilution  
 Predicted band size: 21 kD  
 Observed band size: 20 kD

Please note: All products are 'FOR RESEARCH USE ONLY. NOT FOR USE IN DIAGNOSTIC OR THERAPEUTIC PROCEDURES'.